



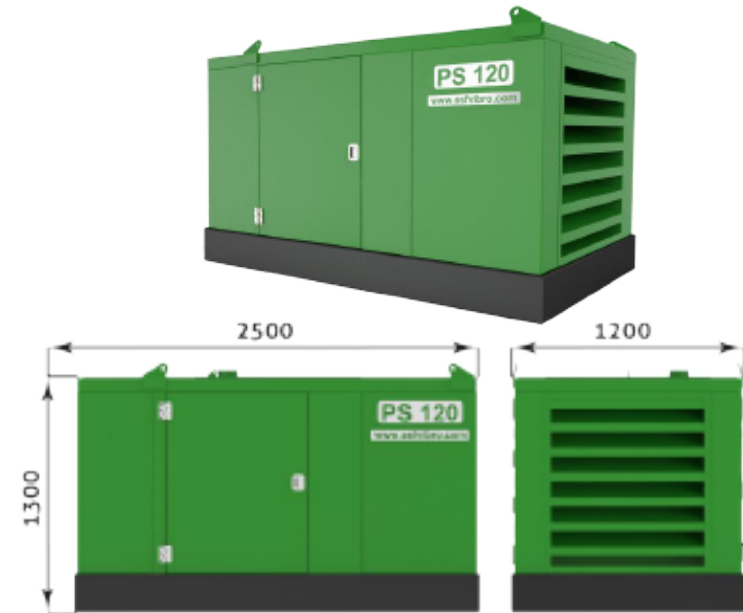
Groundwork

PS POWER PACK



PS 120 POWER PACK

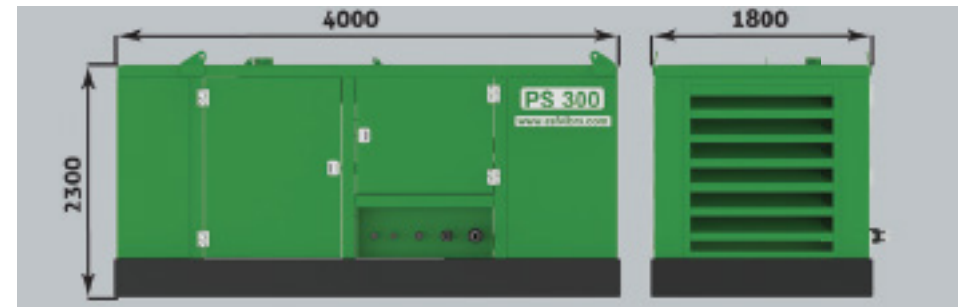
PS120 is specially designed to operate small size vibratory hammers like ESF1-2-3-4 to drive vinyl PVC sheet piles or small posts. By means of this small size power pack, the need for an excavator is eliminated.



Power Pack (For Vibro Hammer)	Unit	ESF 1-2-3-4
Diesel Engine		Optional
Max. Working Pressure	bar	300
Max. Flow	l/min	120
Pump	Detail	Optional
Fuel tank	lt	200
Hydraulic Tank	lt	300
Weight	kg	1400
Length	mm	2500
Width	mm	1200
Height	mm	1300

PS 300 POWER PACK

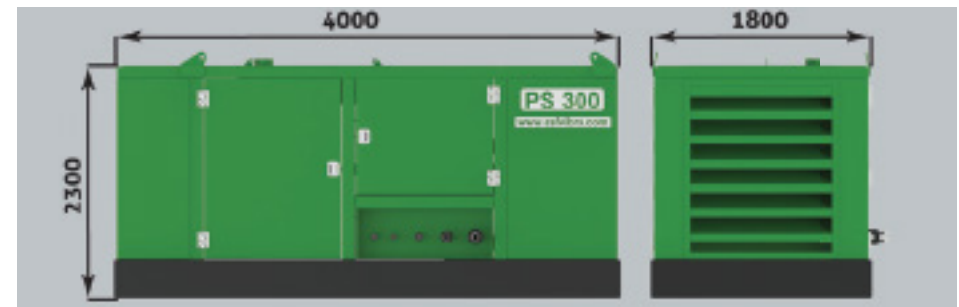
PS300 Power Pack is designed and manufactured to operate crane hanging ESF 12-20-23 kg vibratory hammers which are normal frequency.



Power Pack (For Vibro Hammer)	Unit	ESF 12- 20- 23
Diesel Engine		Optional
Max. Working Pressure	bar	350
Max. Flow	l/min	300
Pump	Detail	Optional
Fuel tank	lt	600
Hydraulic Tank	lt	800
Weight	kg	4200
Length	mm	4000
Width	mm	1800
Height	mm	2300

PS 350 POWER PACK

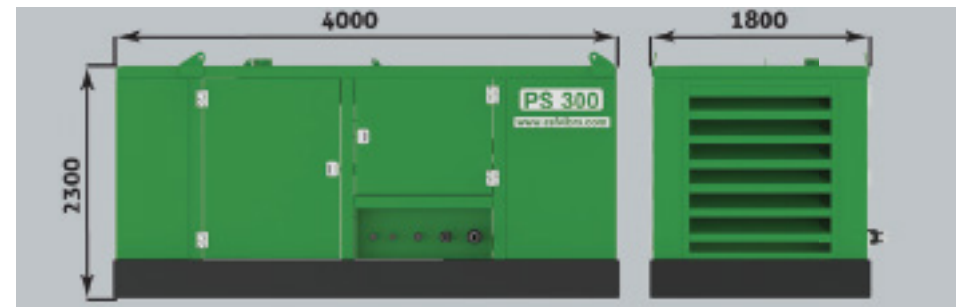
PS350 is designed and manufactured for high-frequency ESF vibratory hammers.



Power Pack (For Vibro Hammer)	Unit	ESF 14- 20- 23
Diesel Engine		Optional
Max. Working Pressure	bar	350
Max. Flow	l/min	350
Pump	Detail	Optional
Fuel tank	lt	600
Hydraulic Tank	lt	800
Weight	kg	4200
Length	mm	4000
Width	mm	1800
Height	mm	2300

PS 400 POWER PACK

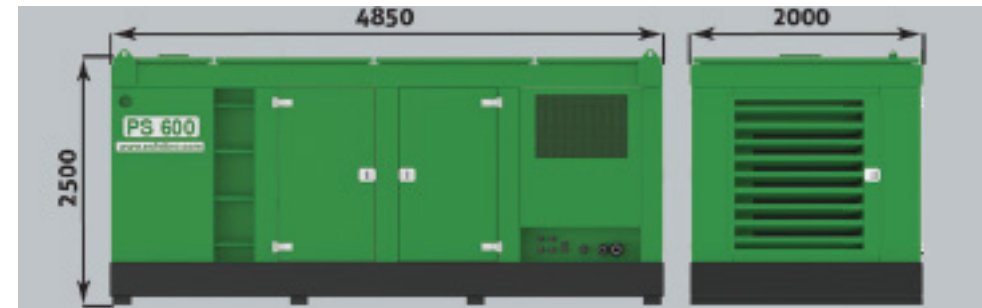
PS 400 is designed and manufactured to operate ESF 30 size Normal Frequency Vibratory Hammer. This size power pack is optimum size.



Power Pack (For Vibro Hammer)	Unit	ESF 30-33
Diesel Engine		Optional
Max. Working Pressure	bar	350
Max. Flow	l/min	400
Pump	Detail	Optional
Fuel tank	lt	600
Hydraulic Tank	lt	950
Weight	kg	5600
Length	mm	4000
Width	mm	1800
Height	mm	2300

PS 600 POWER PACK

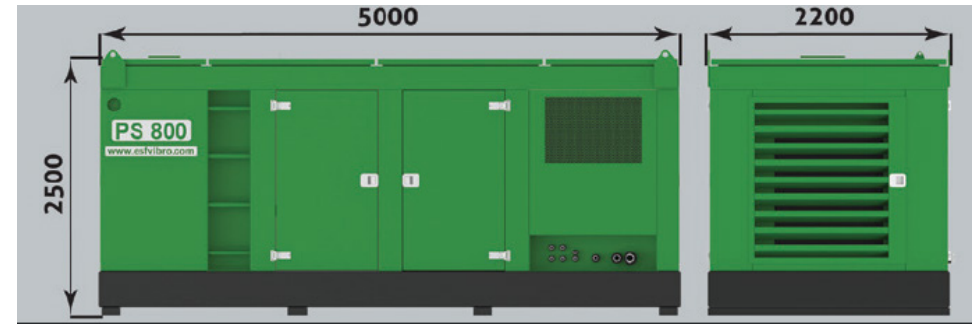
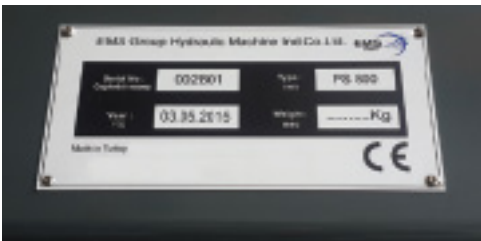
PS 600 is designed and manufactured to operate ESF 55 size vibratory hammer. This power pack is capable to supply 600lt /min . oil flow @ 300 bar pressure.



Power Pack (For Vibro Hammer)	Unit	ESF 55
Diesel Engine		Optional
Max. Working Pressure	bar	350
Max. Flow	l/min	600
Pump	Detail	Optional
Fuel tank	lt	660
Hydraulic Tank	lt	1400
Weight	kg	7790
Length	mm	4850
Width	mm	2000
Height	mm	2500

PS 800 POWER PACK

PS 800 is designed and manufactured to operate ESF 88 vibratory hammer. This power pack is capable to supply 800 lt/min.oil flow @ 350 bar pressure.

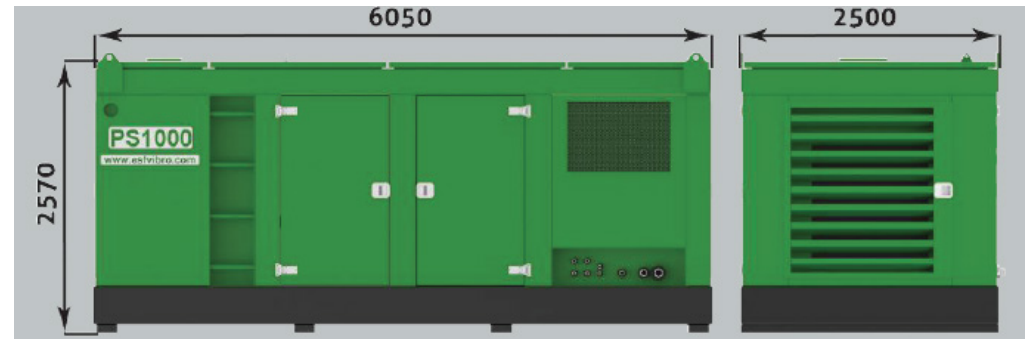
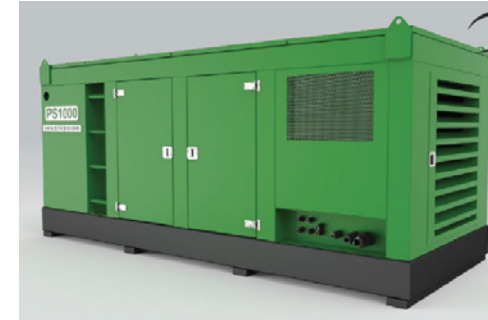


Power Pack (For Vibro Hammer)	Unit	ESF 88
Diesel Engine		Optional
Max. Working Pressure	bar	350
Max. Flow	l/min	800
Pump	Detail	Optional
Fuel tank	lt	1200
Hydraulic Tank	lt	2450
Weight	kg	10400
Length	mm	5000
Width	mm	2200
Height	mm	2500

PS 1000 POWER PACK

PS1000 is designed and manufactured to operate ESF110 vibratory hammer. This power pack is capable to supply 1000 lt/min.oil flow @ 350 bar pressure.

To operate ESF200 size Vibratory Hammer 2xPS1000 is used.



Power Pack (For Vibro Hammer)	Unit	ESF 110
Diesel Engine		Optional
Max. Working Pressure	bar	350
Max. Flow	l/min	1000
Pump	Detail	Optional
Fuel tank	lt	1300
Hydraulic Tank	lt	2600
Weight	kg	12000
Length	mm	6050
Width	mm	2500
Height	mm	2570