



**Groundwork**

STERLING DEMOLITION AND SCRAP ATTACHMENTS

# STERLING DEMOLITION AND SCRAP ATTACHMENTS



# ***TWO CYLINDER MULTI PROCESSORS***

The Sterling Two Cylinder Multi-Processor combines multiple functions in one versatile attachment. By simply changing the jaw set, it can perform crushing, cutting, demolishing and pulverizing tasks efficiently. Ideal for primary and secondary demolition, it provides superior power, speed, and flexibility on site

SMP Series (Pulverizer)



SMD Series (Demolition)



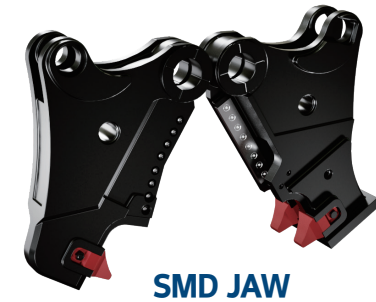
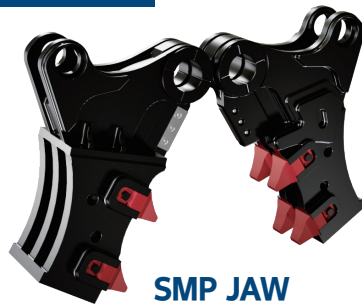
SMS Series (Shear)



SMC Series (Crusher)



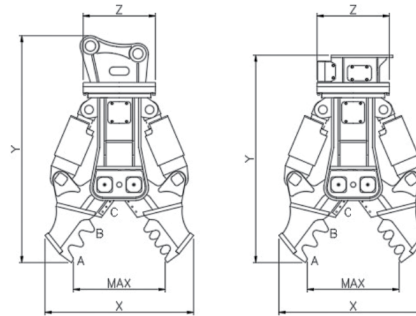
## FOUR QUICK-CHANGE JAW SETS



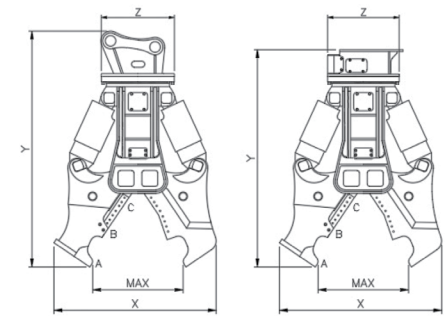
## PRODUCT FEATURES

- Crusher and Pulverizer Jaws are equipped with replaceable teeth
- Teeth are made by a special casting method
- A built-in speed valve ensures faster cycle times and crushing and cutting forces
- Interchangeable and reversible cutting blades
- Capable of cutting through structural steel, rebar, and thick H-beams
- Delivers top-tier cutting power in its class
- Four quick-change Jaw sets : Pulverizer, Demolition, Shear and Crusher

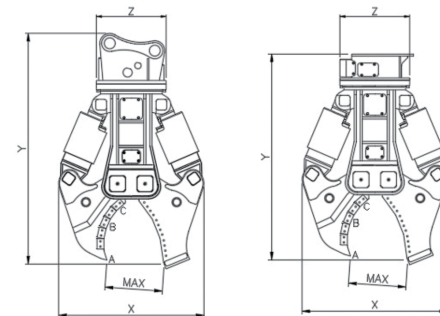
### SMP SERIES (PULVERIZER)



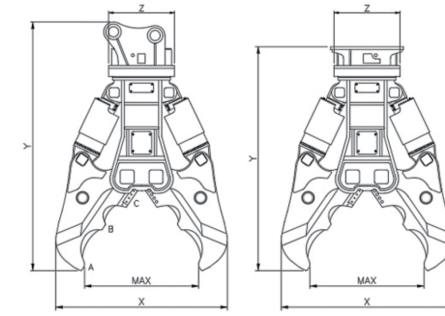
### SMD SERIES (DEMOLITION)



### SMS SERIES (SHEAR)



### SMC SERIES (CRUSHER)



Description	Unit	SMP 15	SMD 15	SMC 15	SMS 15	SMP 20	SMD 20	SMC 20	SMS 20	SMP 30
Operating Weight	kg	1,325	1,280	1,250	1,140	2,000	1,965	1,910	1,760	2,800
	lb	2,921	2,822	2,756	2,513	4,409	4,332	4,211	3,880	6,173
Overall Length, Y-axis (Pin Type)	mm	1,925	1,950	1,950	1,980	2,020	2,020	1,945	2,075	2,430
	Inch	76	77	77	78	80	80	77	82	96
Overall Length, Y-axis (Plate Type)	mm	1,770	1,795	1,795	1,825	1,835	1,835	1,760	1,890	2,225
	Inch	70	71	71	72	72	72	69	74	88
Overall Width, X-axis	mm	1,220	1,210	1,210	1,130	1,480	1,450	1,340	1,350	1,730
	Inch	48	48	48	44	58	57	53	53	68
Overall Width, Z-axis	mm	650	650	650	650	700	700	700	700	800
	Inch	26	26	26	26	28	28	28	28	31
Max. Opening Width, MAX	mm	770	815	815	490	900	900	950	550	1,000
	Inch	30	32	32	19	35	35	37	22	39
Crushing & Cutting	ton (A)	55	50	50	60	80	80	75	90	145
Force	ton (B)	90	85	85	100	160	160	155	175	250
	ton (C)	180	180	180	175	480	480	480	470	560
Operating Pressure	kg/cm <sup>2</sup>	300	300	300	300	320	320	320	320	350
	psi	4,267	4,267	4,267	4,267	4,551	4,551	4,551	4,551	4,978
Oil Flow Rate	LPM	100 ~ 160	100 ~ 160	100 ~ 160	100 ~ 160	200 ~ 250	200 ~ 250	200 ~ 250	200 ~ 250	250 ~ 320
	GPM	26 ~ 42	26 ~ 42	26 ~ 42	26 ~ 42	53 ~ 66	53 ~ 66	53 ~ 66	53 ~ 66	66 ~ 85
Motor Setting Pressure	kg/cm <sup>2</sup>	160	160	160	160	160	160	160	160	160
	psi	2,276	2,276	2,276	2,276	2,276	2,276	2,276	2,276	2,276
Motor Oil Flow Rate	LPM	36 ~ 40	36 ~ 40	36 ~ 40	36 ~ 40	36 ~ 40	36 ~ 40	36 ~ 40	36 ~ 40	36 ~ 40
	GPM	10 ~ 11	10 ~ 11	10 ~ 11	10 ~ 11	10 ~ 11	10 ~ 11	10 ~ 11	10 ~ 11	10 ~ 11
Suitable Excavator	ton	14 ~ 18	14 ~ 18	14 ~ 18	14 ~ 18	19 ~ 26	19 ~ 26	19 ~ 26	19 ~ 26	26 ~ 32

※ Specifications above are subject to change without notice.

Description	Unit	SMD 30	SMC 40	SMS 40	SMP 40	SMD 40	SMC 40	SMS 40	SMC 50	SMS 50
Operating Weight	kg	2,750	2,630	2,550	3,850	3,750	3,680	3,550	4,750	4,600
	lb	6,063	5,798	5,622	8,488	8,267	8,113	7,826	10,472	10,141
Overall Length, Y-axis (Pin Type)	mm	2,430	2,650	2,440	2,780	2,750	2,705	2,750	2,980	2,800
	Inch	96	104	96	109	108	106	108	117	110
Overall Length, Y-axis (Plate Type)	mm	2,225	2,445	2,235	2,540	2,510	2,465	2,510	2,640	2,460
	Inch	88	96	88	100	99	97	99	104	97
Overall Width, X-axis	mm	1,730	1,800	1,585	1,965	1,845	1,785	1,690	2,260	1,785
	Inch	68	71	62	77	73	70	67	89	70
Overall Width, Z-axis	mm	800	800	800	800	800	800	800	900	900
	Inch	31	31	31	31	31	31	31	35	35
Max. Opening Width, MAX	mm	1,000	1,100	600	1,140	1,220	1,250	670	1,400	760
	Inch	39	43	24	45	48	49	26	55	30
Crushing & Cutting	ton (A)	145	135	150	180	175	170	195	210	225
Force	ton (B)	250	240	285	320	315	310	320	420	435
	ton (C)	560	560	550	785	785	785	770	835	820
Operating Pressure	kg/cm <sup>2</sup>	350	350	350	350	350	350	350	350	350
	psi	4,978	4,978	4,978	4,978	4,978	4,978	4,978	4,978	4,978
Oil Flow Rate	LPM	250 ~ 320	250 ~ 320	250 ~ 320	360 ~ 380	360 ~ 380	360 ~ 380	360 ~ 380	360 ~ 380	360 ~ 380
	GPM	66 ~ 85	66 ~ 85	66 ~ 85	95 ~ 100	95 ~ 100	95 ~ 100	95 ~ 100	95 ~ 100	95 ~ 100
Motor Setting Pressure	kg/cm <sup>2</sup>	160	160	160	160	160	160	160	160	160
	psi	2,276	2,276	2,276	2,276	2,276	2,276	2,276	2,276	2,276
Motor Oil Flow Rate	LPM	36 ~ 40	36 ~ 40	36 ~ 40	75 ~ 80	75 ~ 80	75 ~ 80	75 ~ 80	75 ~ 80	75 ~ 80
	GPM	10 ~ 11	10 ~ 11	10 ~ 11	20 ~ 21	20 ~ 21	20 ~ 21	20 ~ 21	20 ~ 21	20 ~ 21
Suitable Excavator	ton	26 ~ 32	26 ~ 32	26 ~ 32	30 ~ 40	30 ~ 40	30 ~ 40	30 ~ 40	36 ~ 48	36 ~ 48

※ Specifications above are subject to change without notice.

# ***ONE CYLINDER MULTI PROCESSORS***

The Sterling One Cylinder Multi-Processor combines multiple functions in one versatile attachment. By simply changing the jaw set, it can perform cutting, demolishing, and pulverizing tasks efficiently. Ideal for primary and secondary demolition, it provides superior power, speed, and flexibility on site.

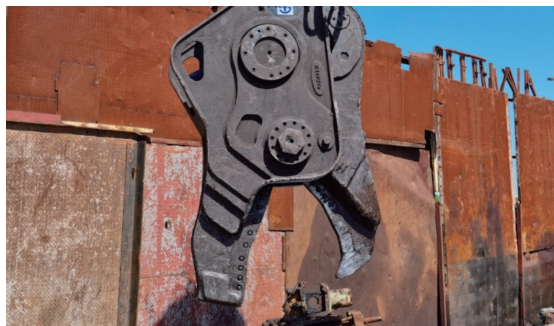
SS Series (Shear)



SP Series (Pulverizer)



SD Series (Demolition)



## THREE QUICK-CHANGE JAW SETS



SS JAW



SP JAW



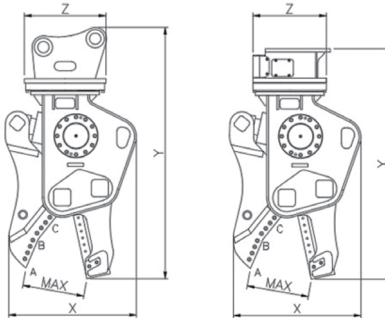
SD JAW



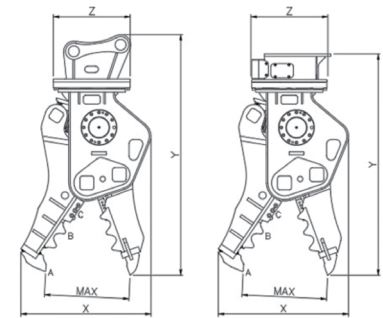
## PRODUCT FEATURES

- Pulverizer Jaw is equipped with replaceable teeth
- Teeth are made by a special casting method.
- A built-in speed valve ensures faster cycle times and greater crushing and cutting forces
- Interchangeable and reversible cutting blades
- Short and compact body design enhances work efficiency
- Three quick-change Jaw sets : Shear, Pulverizer and Demolition

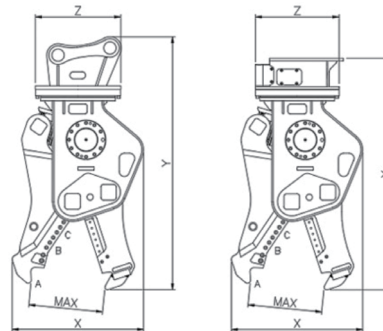
### SS SERIES (SHEAR)



### SP SERIES (PULVERIZER)



### SD SERIES (DEMOLITION)



Description	Unit	SS 20	SP 20	SD 20	SS 30	SP 30	SD 30
Operating Weight	kg	2,100	2,150	2,000	2,600	2,650	2,700
	lb	4,630	4,740	4,409	5,732	5,842	5,952
Overall Length, Y-axis (Pin Type)	mm	2,335	2,420	2,325	2,455	2,585	2,445
	Inch	92	95	92	97	102	96
Overall Length, Y-axis (Plate Type)	mm	2,150	2,235	2,140	2,250	2,380	2,240
	Inch	85	88	84	89	94	88
Overall Width, X-axis	mm	1,185	1,360	1,250	1,220	1,400	1,280
	Inch	47	54	49	48	55	50
Overall Width, Z-axis	mm	700	700	700	800	800	800
	Inch	28	28	28	31	31	31
Max. Opening Width, MAX	mm	520	880	760	610	910	710
	Inch	20	35	30	24	36	28
Crushing & Cutting	ton (A)	63	53	48	85	69	83
Force	ton (B)	87	97	117	142	125	165
	ton (C)	170	170	170	217	217	217
Operating Pressure	kg/cm <sup>2</sup>	320	320	320	320	320	320
	psi	4,551	4,551	4,551	4,551	4,551	4,551
Oil Flow Rate	LPM	200 ~ 250	200 ~ 250	200 ~ 250	250 ~ 320	250 ~ 320	250 ~ 320
	GPM	53 ~ 66	53 ~ 66	53 ~ 66	66 ~ 85	66 ~ 85	66 ~ 85
Motor Setting Pressure	kg/cm <sup>2</sup>	160	160	160	160	160	160
	psi	2,276	2,276	2,276	2,276	2,276	2,276
Motor Oil Flow Rate	LPM	36 ~ 40	36 ~ 40	36 ~ 40	36 ~ 40	36 ~ 40	36 ~ 40
	GPM	10 ~ 11	10 ~ 11	10 ~ 11	10 ~ 11	10 ~ 11	10 ~ 11
Suitable Excavator	ton	19 ~ 26	19 ~ 26	19 ~ 26	26 ~ 32	26 ~ 32	26 ~ 32
Cylinder Size (mm)	mm	Ø200	Ø200	Ø200	Ø225	Ø225	Ø225
Opening / Closing Normal Time	Opening (sec)	2.3	2.3	2.3	3.5	3.5	3.5
	Closing (sec)	5.4	5.4	5.4	6.2	6.2	6.2
Opening / Closing Speed-Type Time	Total Cycle (sec)	7.7	7.7	7.7	9.7	9.7	9.7
	Opening (sec)	2.3	2.3	2.3	3.5	3.5	3.5
	Closing (sec)	3	3	3	3.6	3.6	3.6
	Total Cycle (sec)	5.3	5.3	5.3	7.1	7.1	7.1
Based Oil Flow	LPM	240	240	240	300	300	300

※ Specifications above are subject to change without notice.

# ***STATIC PULVERIZER (REPLACEABLE TOOTH TYPE)***

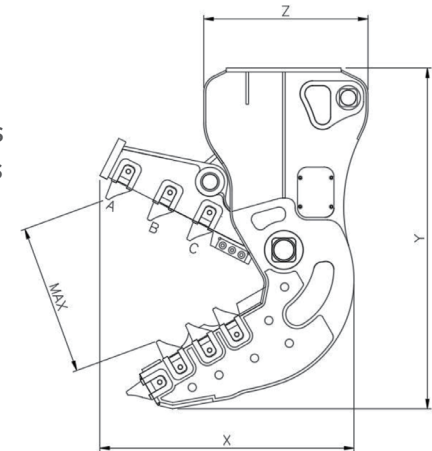


The Sterling Two Cylinder Multi-Processor combines multiple functions in one versatile attachment. By simply changing the jaw set, it can perform crushing, cutting, demolishing and pulverizing tasks efficiently. Ideal for primary and secondary demolition, it provides superior power, speed, and flexibility on site

## ◎ PRODUCT FEATURES

- Pulverizer is equipped with replaceable teeth
- Teeth are made by a special casting method.
- A built-in speed valve ensures faster cycle times and greater crushing and cutting forces
- Interchangeable and reversible cutting blades
- Short and compact body design enhances work efficiency
- Replaceable teeth to reduce downtime and maintenance costs

### SRP SERIES (REPLACEABLE TOOTH TYPE)



Description	Unit	SRP 15	SRP 20	SRP 30	SRP 40
Operating Weight	kg	1,150	2,100	2350	3450
	lb	2,535	4,630	5180.864	7605.949
Overall Length, Y-axis (Pin Type)	mm	1,850	2,470	2250	2900
	Inch	73	97	88.583	114.173
Overall Length, Y-axis (Plate Type)	mm	1,695	2,285	2100	2440
	Inch	67	90	82.677	96.063
Overall Width, X-axis	mm	1,277	1,300	1540	1840
	Inch	50	51	60.630	72.441
Overall Width, Z-axis	mm	440	700	520	650
	Inch	17	28	20.472	25.591
Max. Opening Width, MAX	mm	720	895	920	1150
	Inch	28	35	36.220	45.276
Crushing & Cutting	ton (A)	45	50	78	152
Force	ton (B)	70	97	122	220
	ton (C)	125	165	230	340
Operating Pressure	kg/cm <sup>2</sup>	300	320	320	320
	psi	4,267	4,551	4551.487	4551.487
Oil Flow Rate	LPM	100 ~ 160	200 ~ 250	250 ~ 320	250 ~ 320
	GPM	26 ~ 42	53 ~ 66	66 ~ 85	66 ~ 85
Motor Setting Pressure	kg/cm <sup>2</sup>	-	160	-	-
	psi	-	2,276	-	-
Motor Oil Flow Rate	LPM	-	36 ~ 40	-	-
	GPM	-	10 ~ 11	-	-
Suitable Excavator	ton	14 ~ 18	19 ~ 26	26 ~ 32	36 ~ 48
Cylinder Size (mm)	mm	Ø180	Ø200	Ø225	Ø250
Opening / Closing Normal Time	Opening (sec)	2.3	3.5	2.4	5.5
	Closing (sec)	4.8	6.7	5.7	12.7
Opening / Closing Speed-Type Time	Total Cycle (sec)	7.1	10.2	8.1	18.2
	Opening (sec)	2.3	3.5	2.4	5.5
	Closing (sec)	2.5	4.2	3.2	7.13
	Total Cycle (sec)	4.8	7.7	5.6	12.63
Based Oil Flow	LPM	150	240	300	300

※ Specifications above are subject to change without notice.

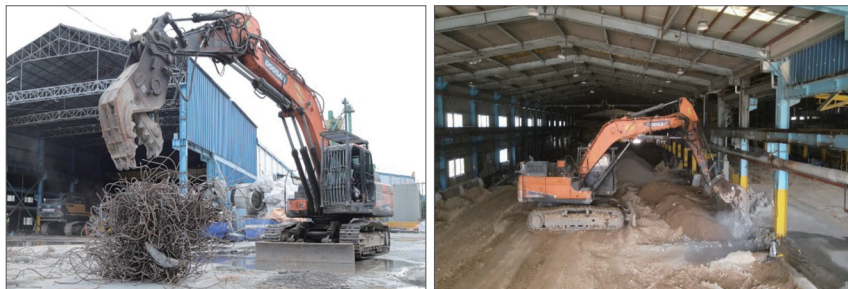
# ***STATIC PULVERIZER (WELDED TOOTH TYPE)***



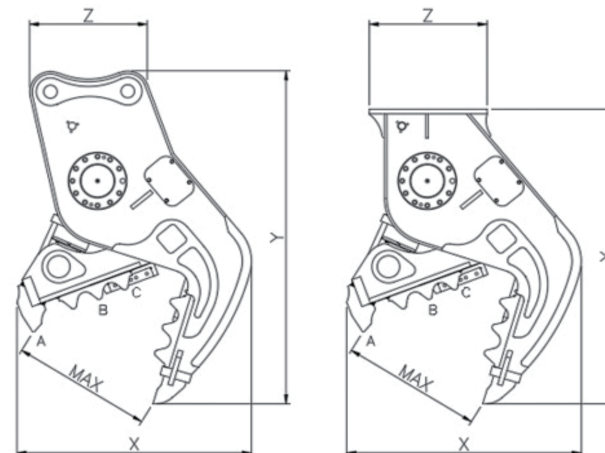
The Sterling Static Pulverizer is a fixed-type attachment for secondary demolition. With its powerful jaws and robust structure, it can crush reinforced concrete and separate rebar effectively.

## ◎ PRODUCT FEATURES

A built-in speed valve ensures faster cycle times and greater crushing and cutting forces. Interchangeable and reversible cutting blades  
Short and compact body design enhances work efficiency



SFP SERIES (WELDED TOOTH TYPE)



Description	Unit	SRP 15	SRP 20	SRP 30	SRP 40
Operating Weight	kg	1,150	1,800	2,350	3,450
	lb	2,535	3,968	5,181	7,606
Overall Length, Y-axis (Pin Type)	mm	1,850	2,200	2,250	2,900
	Inch	73	87	89	114
Overall Length, Y-axis (Plate Type)	mm	1,695	1,850	2,100	2,440
	Inch	67	73	83	96
Overall Width, X-axis	mm	1,277	1,440	1,540	1,840
	Inch	50	57	61	72
Overall Width, Z-axis	mm	440	460	520	650
	Inch	17	18	20	26
Max. Opening Width, MAX	mm	720	850	920	1,150
	Inch	28	33	36	45
Crushing & Cutting	ton (A)	45	62	78	152
Force	ton (B)	70	92	122	220
	ton (C)	125	165	230	340
Operating Pressure	kg/cm <sup>2</sup>	300	320	320	320
	psi	4,267	4,551	4,551	4,551
Oil Flow Rate	LPM	100 ~ 160	200 ~ 250	250 ~ 320	250 ~ 320
	GPM	26 ~ 42	53 ~ 66	66 ~ 85	66 ~ 85
Motor Setting Pressure	kg/cm <sup>2</sup>	-	-	-	-
	psi	-	-	-	-
Motor Oil Flow Rate	LPM	-	-	-	-
	GPM	-	-	-	-
Suitable Excavator	ton	14 ~ 18	19 ~ 26	26 ~ 32	36 ~ 48
Cylinder Size (mm)	mm	Ø180	Ø200	Ø225	Ø250
Opening / Closing Normal Time	Opening (sec)	2.3	2.1	2.4	5.5
	Closing (sec)	4.8	4.8	5.7	12.7
Opening / Closing Speed-Type Time	Total Cycle (sec)	7.1	6.9	8.1	18.2
	Opening (sec)	2.3	2.1	2.4	5.5
	Closing (sec)	2.5	2.7	3.2	7.1
	Total Cycle (sec)	4.8	4.8	5.6	12.6
Based Oil Flow	LPM	150	240	300	300

※ Specifications above are subject to change without notice.

# ***CAR DISMANTLER***

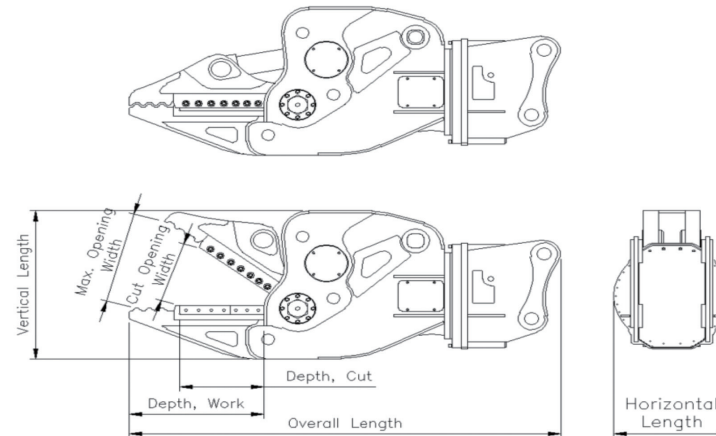
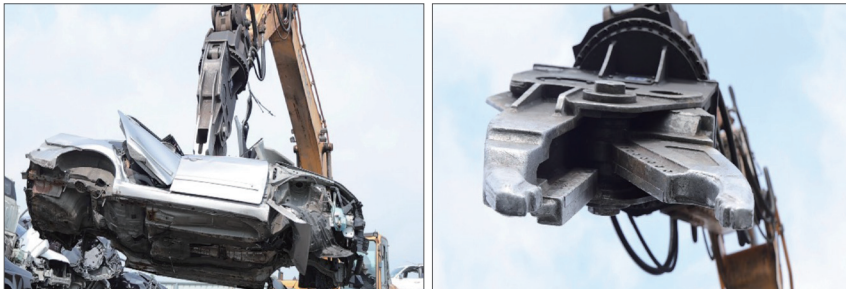


The Sterling Car Dismantler is a specialized attachment for vehicle recycling applications. With its powerful jaws and precise control, it allows operators to dismantle cars efficiently — separating engines, wiring, and body panels with minimal damage.

## ◎ **PRODUCT FEATURES**

- Powerful motor enables 360° rotation for precision work
- Cut vehicles easier and dismantle them quicker
- Rapid dismantling boosts efficiency
- Achieve a significant increase in efficiency and handle the precise operations

### SCD SERIES (CAR DISMANTLER)



Description	Unit	SCD 15	SCD 20	SCD 30
Operating Weight	kg	900	1,910	2,100
	lb	1,984	4,210	4,629
Overall Length	mm	1,900	2,560	2,610
	inch	48	100	102
Vertical Length	mm	900	1,045	1,045
	inch	35	41	41
Horizontal Length	mm	590	692	815
	inch	23	27	32
Max. Opening Width	mm	600	650	650
	inch	23	25	25
Cutter Opening Width	mm	415	415	415
	inch	16	16	16
Depth, Work	mm	600	800	800
	inch	23	31	31
Depth, Cutter	mm	230	500	500
	inch	9	19	19
Crushing Force at Tip	ton	12	42	47
Max. Cutting Force	ton	50	165	185
Operating Pressure	kg/cm <sup>2</sup>	300	320	350
Operating Oil Flow Rate	LPM	250~300	250 ~ 300	250 ~ 320
Rotating Motor Quantity	ea	2	2	2
Motor Setting Pressure	kg/cm <sup>2</sup>	120	160	160
Motor Oil Flow Rate	LPM	15~20	36 ~ 40	36 ~ 40
Suitable Excavator	ton	12~17	18 ~ 26	26 ~ 32

※ Specifications above are subject to change without notice.

# DEMOLITION SHEAR

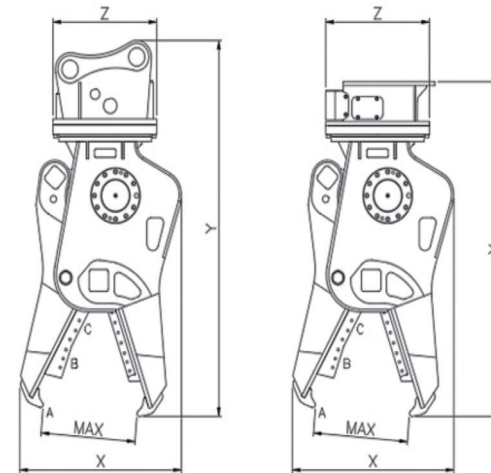
The Sterling Demolisher is designed for primary demolition work. It provides strong crushing and cutting power to efficiently dismantle concrete structures and steel frames.

## PRODUCT FEATURES

- A built-in speed valve ensures faster cycle times and greater crushing and cutting forces
- Short and compact body design enhances work efficiency
- Interchangeable and reversible cutting blades



### SFD SERIES (DEMOLITION)



Description	Unit	SFD 15	SFD 20	SFD 30
Operating Weight	kg	1,000	2,000	2,450
	lb	2,205	4,409	5,401
Overall Length, Y-axis (Pin Type)	mm	1,760	2,140	2,180
	Inch	69	84	86
Overall Length, Y-axis (Plate Type)	mm	1,605	1,955	1,975
	Inch	63	77	78
Overall Width, X-axis	mm	695	1,110	1,215
	Inch	27	44	48
Overall Width, Z-axis	mm	650	700	800
	Inch	26	28	31
Max. Opening Width, MAX	mm	530	650	740
	Inch	21	26	29
Crushing & Cutting	ton (A)	42	86	93
Force	ton (B)	80	190	280
	ton (C)	163	253	468
Operating Pressure	kg/cm <sup>2</sup>	250	320	320
	psi	3,556	4,551	4,551
Oil Flow Rate	LPM	200 ~ 250	200 ~ 250	250 ~ 320
	GPM	53 ~ 66	53 ~ 66	66 ~ 85
Motor Setting Pressure	kg/cm <sup>2</sup>	160	160	160
	psi	2,276	2,276	2,276
Motor Oil Flow Rate	LPM	36 ~ 40	36 ~ 40	36 ~ 40
	GPM	10 ~ 11	10 ~ 11	10 ~ 11
Suitable Excavator	ton	13 ~ 17	19 ~ 26	26 ~ 32
Cylinder Size (mm)	mm	Ø160	Ø200	Ø225
Opening / Closing Normal Time	Opening (sec)	2	2	4
	Closing (sec)	3	5	6
Opening / Closing Speed-Type Time	Total Cycle (sec)	5	8	10
	Opening (sec)	2	2	4
	Closing (sec)	2	3	4
Based Oil Flow	Total Cycle (sec)	3	5	7
	LPM	80	240	300

※ Specifications above are subject to change without notice.