



TR625

HERACLES

Overall length to front carriage — 3900mm
 Ground clearance — 380mm
 Pallet fork length — 1220mm
 Engine brand — YUNNEI/YN27GBZ
 Engine rate power — 58KW
 Hydraulic oil tank — 115L
 Diesel tank — 63L
 Drive type — 4 wheel drive
 Package — 1 unit (1*20GP), 3unit(1*40HP)

Optional engine
 EURO5 standard: CHANGCHAI (55KW)
 EPA4/EURO5 standard: KOHLER KDI2504TCR(55KW)
 EPA4 standard: CUMMINS QSF2.8(55KW)
 Transmission type
 Gearbox + Hydraulic converter + Drive shaft +
 Drive axle
 Steering type
 Front Wheel Steering/ Crab Steering/
 Four Wheel Steering

Max. load — 2500kg
 Max. lift capacity to full height — 2000kg
 Max. lift capacity at full reach — 800kg
 Max. lift height — 5900mm
 Bucket lifting force — 4205N
 Reach at max. lift height — 450mm
 Max. forward reach — 3300mm
 Weight unload — 4988kg
 Overall length to front carriage — 3900mm
 Ground clearance — 380mm
 Pallet fork length — 1220mm
 Engine brand — YUNNEI/YN27GBZ
 Engine rate power — 58KW
 Hydraulic oil tank — 115L
 Tyre — 14-17.5
 Outside turn radius(over tyre) — 3310mm
 Overall height — 2000mm
 Overall width(over tyre) — 1810mm
 Inside width of cab — 800mm
 Front track — 1480mm
 Wheelbase — 2300mm



TR730

HERACLES



TABLE HEADING



Max. load — 3000kg
 Max. lift height — 7000mm
 Reach at max. lift height — 450mm
 Max. forward reach — 3600mm
 Weight unload — 7000kg
 Tyre — 16/70-20
 Outside turn radius(over tyre) — 4250mm
 Carriage roll back angle(degrees) — 42.6
 Carriage dump angle(degrees) — 37.5
 Overall height — 2300mm
 Overall width(over tyres) — 2150mm
 Inside width of cab — 800mm
 Front track — 1750mm
 Wheelbase — 2850mm
 Overall length to front tyres — 4200mm
 Overall length to front carriage — 4650mm
 Ground clearance — 350mm
 Pallet fork length — 1220mm
 Engine brand/model — YUNNEI/YN38GBZ
 Engine rate power — 76KW
 Drive type — 4 wheel drive
 Package(1*20GP) — 1 unit

Optional engine
 China II standard: Cummins 4BT3.9-C100
 EURO3 standard: Cummins QSB3.9-C100
 EURO5 standard: CHANGCHAI (55KW)
 EPA4/EURO5 standard: KOHLER KDI2504TCR(55KW)
 EPA4 standard: Cummins QSF2.8(55KW)
 EPA4/EURO5 standard: FPT F36 (75KW)
 Transmission type
 Gearbox + Hydraulic converter + Drive shaft +
 Drive axle
 Steering type
 Front Wheel Steering/ Crab Steering/
 Four Wheel Steering

TR 735

HERACLES



Optional engine
 China II standard: Cummins 4BT3.9-C100
 EURO3 standard: Cummins QSB3.9-C100
 EURO5 standard: CHANGCHAI (55KW)
 EPA4/EURO5 standard: KOHLER KDI2504TCR(55KW)
 EPA4 standard: Cummins QSF2.8(55KW)
 EPA4/EURO5 standard: FPT F36(75KW)
 Transmission type
 Gearbox + Hydraulic converter + Drive shaft + Drive axle
 Steering type
 Front Wheel Steering/ Crab Steering/
 Four Wheel Steering
 Optional transmission type
 Closed piston pump+walking pump/motor+ gearbox+drive axle

Max. load — 3500kg
 Max. lift height — 7000mm
 Reach at max. lift height — 450mm
 Max. forward reach — 3600mm
 Weight unload — 7200kg
 Tyre — 16/70-24
 Outside turn radius(over tyre) — 4250mm
 Carriage roll back angle(degrees) — 42.6
 Carriage dump angle(degrees) — 37.5
 Overall height — 2300mm
 Overall width(over tyres) — 2150mm
 Inside width of cab — 800mm
 Front track — 1750mm
 Wheelbase — 2850mm
 Overall length to front tyres — 4200mm
 Overall length to front carriage — 4650mm
 Ground clearance — 350mm
 Pallet fork length — 1220mm
 Engine brand — YUNNEI YN38GBZ
 Engine rate power — 76KW
 Drive type — 4 wheel drive
 Package(1*20GP) — 1 unit



TR740

HERACLES

Max. load — 4000kg
 Max. lift height — 7000mm
 Reach at max. lift height — 450mm
 Max. forward reach — 3600mm
 Weight unload — 7800kg
 Tyre — 400/70R24(width:404mm,diameter:1170mm)
 Outside turn radius(over tyre) — 4250mm
 Carriage roll back angle(degrees) — 42.6
 Carriage dump angle(degrees) — 37.5
 Overall height — 2450mm
 Overall width(over tyres) — 2150mm
 Inside width of cab — 800mm
 Front track — 1750mm
 Wheelbase — 2850mm
 Overall length to front carriage — 5092mm
 Ground clearance — 350mm
 Pallet fork length — 1220mm
 Drive type — 4 wheel drive
 Engine brand/model — YUCHAI/YCD4J22T-115
 Engine rate power — 85KW
 Package(1*40HQ) — 2 units

Optional engine
 China II standard: Cummins 4BT3.9-C100(74KW)
 EURO3 standard: Cummins QSB3.9-C100(74KW)
 EURO5 standard: YUCHAI(81KW)/PERKINS(74.5KW)
 EPA4/EURO5 standard: FPT F36(75KW)
 EPA4 standard: Cummins QSF3.8(74.5KW)
 Transmission type
 Gearbox + Hydraulic converter + Drive shaft + Drive axle
 Steering type
 Front Wheel Steering/Crab Steering
 Four Wheel Steering

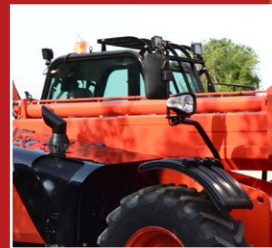


TR 750

HERACLES

Max. load	— 5000kg
Max. lift height	— 7000mm
Reach at max. lift height	— 450mm
Max. forward reach	— 3600mm
Weight unload	— 10000kg
Tyre	— 16.9-24真空轮胎
Outside turn radius(over tyre)	— 4250mm
Carriage roll back angle(degrees)	— 42.6
Carriage dump angle(degrees)	— 37.5
Overall height	— 2500mm
Overall width(over tyres)	— 2200mm
Inside width of cab	— 800mm
Front track	— 1750mm
Wheelbase	— 2850mm
Overall length to front tyres	— 4200mm
Ground clearance	— 350mm
Pallet fork length	— 1220mm
Engine brand/model	— YUCHAI YCD4J22T-125
Engine rate power	— 91KW
Drive type	— 4 wheel drive
Package(1*40HQ)	— 2 units

Optional engine	
China II standard:	Cummins 4BT3.9-C125(92KW)
EURO3 standard:	Cummins QSB3.9-C125(92KW)
EURO5 standard:	YUCHAI(92KW)
EPA4/EURO5 standard:	FPT F36(90KW)
EPA4 standard:	Cummins QSF3.8
Transmission type	
Gearbox + Hydraulic converter + Drive shaft + Drive axle	
Steering type	
Front Wheel Steering/Crab Steering	
Four Wheel Steering	



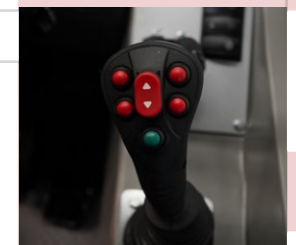
TR1035

HERACLES



Max. load	— 3500kg
Max. lift height	— 1000mm
Max. forward reach	— 7000mm
Weight unload	— 8375kg
Tyre	— 400/70R24(width:404mm,diameter:1170mm)
Outside turn radius(over tyre)	— 4250mm
Overall height	— 2450mm
Overall width(over tyre)	— 2150mm
Width of cab	— 820mm
Front track	— 1750mm
Wheelbase	— 2850mm
Overall length to front carriage	— 5092mm
Ground clearance	— 350mm
Pallet fork length	— 1220mm
Engine brand	— YUCHAI/YCD4J22T-115
Engine rate power	— 85KW
Hydraulic oil tank	— 135L
Diesel tank	— 120L
Drive type	— 4 wheel drive
Package(1*40高柜)	— 2 units

Optional engine	
China II standard:	Cummins 4BT3.9-C125
EURO3 standard:	Cummins QSB3.9-C125
EURO5 standard:	YUCHAI(92KW)
EPA4/EURO5 standard:	FPT F36(90KW)
EPA4 standard:	Cummins QSF3.8
Transmission type	
Gearbox + Hydraulic converter + Drive shaft + Drive axle	
Steering type	
Front Wheel Steering/Crab Steering	
Four Wheel Steering	



TR1050

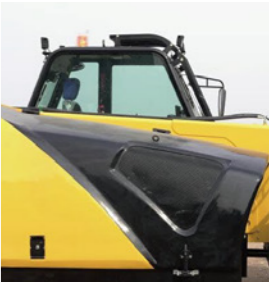
HERACLES

Max. load — 5000kg
Max. lift height — 10000mm
Max. forward reach — 7000mm
Weight unload — 10300kg
Tyre — 16.9-24
Outside turn radius(over tyre) — 4250mm
Carriage roll back angle(degree) — 42.6
Carriage dump angle(degrees) — 37.5
Overall height — 2500mm
Overall width(over tyre) — 2150mm
Width of cab — 820mm
Overall length to front tyre — 4600mm
Front track — 1750mm
Wheelbase — 2850mm
Ground clearance — 350mm
Pallet fork length — 1220mm
Engine brand/model — YUCHAI/YCD4J22T-125
Engine rate power — 91KW
Drive type — 4 wheel drive
Package(1*40) — 2 units

Optional engine
China II standard: Cummins 4BT3.9-C125
EURO3 standard: Cummins QSB3.9-C125
EURO5 standard:YUCHAI(92KW)
EPA4/EURO5 standard:FPT F36(90KW)
EPA4 standard:Cummins QSF3.8
Transmission type
Gearbox + Hydraulic converter + Drive shaft + Drive axle
Steering type
Front Wheel Steering/Crab Steering
Four Wheel Steering



TR1440

FORKLIFT TRUCK
HERACLES


Engine
Brand/model:YUCHAI/YCD4J22T-125
Power:91kw
Optional engine:
China II standard: Cummins 4BT3.9-C125(92KW)
EURO3 standard: Cummins QSB3.9-C125(92KW)
EURO5 standard:YUCHAI(92KW)
EPA4/EURO5 standard:FPT F36(90KW)
EPA4 standard:Cummins QSF3.8

Max. load — 5000kg
Maximum lift height — 14000mm
Maximum reach — 9580mm
Maximum traction force — $\geq 70kn$
Minimum ground clearance — 420mm
Overall dimensions(L×W×H) — 6970×2430×2550mm
Minimum width (hydraulic outriggers fully open) — 3800mm
Wheelbase — 3670mm
Axle track — 1990mm
Rear wheel center to rear — 1240mm
Turning radius (outer wheel) — $\leq 4500mm$
Pallet fork length — 1220mm
Tire model — 16.9-24
Drive type — 4 wheel drive
Steering type — Front Wheel Steering/ Crab Steering /Four Wheel Steering
Transmission type — Closed piston pump + walking pump/ motor + gearbox + drive axle
Optional transmission type — Gearbox + Hydraulic converter + Drive shaft + Drive axle
Service brake — Oil-immersed multi-disc hydraulic brake[Disc Brake]
Parking brake — Negative braking
Weight (with forks) — 12300kg
Gear Control — Electronic control
Hydraulic control system — Multifunctional centralized handle
Frame leveling — +/- 9°
Package(1*40HQ) — 1 unit



TR 1840

FORKLIFT TRUCK

HERACLES

PRODUCT PARAMETERS
HERACLES

Max. load — 4500kg
Max. lift height — 18000mm
Max. reach — 13080mm
Max. traction force — $\geq 70kn$
Min. ground clearance — 420mm
Overall dimensions(L×W×H) — 6970×2430×2550mm
Min. width (hydraulic outriggers fully open) — 3800mm
Width of cab — 820mm
Wheelbase — 3670mm
Axle track — 1990mm
Rear wheel center to rear — 1240mm
Turning radius (outer wheel) — $\leq 4500mm$
Pallet fork length — 1220mm
Tire model — 16.9-24
Drive type — 4 wheel drive
Service brake — Oil-immersed multi-disc hydraulic brake[Disc Brake]
Parking brake — Negative braking
Weight (with forks) — 13000kg
Number of gears (forward/reverse,high/low speed) — 4/4
Gear Control — Electronic control
Hydraulic control system — Multifunctional centralized handle
Frame leveling — +/- 9°
Package(1*40HQ) — 1 unit

Engine
Brand/model — YUCHAI/YCD4J22T-125
Power — 91kw
Optional engine
China II standard: Cummins 4BT3.9-C125(92KW)
EURO3 standard: Cummins QSB3.9-C125(92KW)
EURO5 standard:YUCHAI(92KW)
EPA4/EURO5 standard:FPT F36(90KW)
EPA4 standard:Cummins QSF3.8
Transmission type
Closed piston pump + walking pump/ motor + gearbox + drive axle
Steering type
Front Wheel Steering/Crab Steering/ Four Wheel Steering
Optional transmission type
Gearbox + Hydraulic converter + Drive shaft + Drive axle





PRODUCT PARAMETERS

mm L*W*H: 7600×2260×2890mm	Rated Power: 85KW
Wheel base: 2250mm	Optional Engine: YCF36110-S500 81KW 4BT3.9-C100 75KW
Min. Ground Clearance : 300mm	4BT3.9-C125 92KW EPA4/ F36 (FPT) 75KW EPA4 QSF3.8
Bucket Capacity : 1.3m3	Steering System
Breakout Force : 38KN	Steering Angle: ±36 o
Loading Lifting Capacity : 2500KG	Min. turning radius: 6581mm
Bucket Dumping Height : 2800mm	Pressure of the system : 12Mpa
Bucket Dumping Distance : 1062mm	Axle—Brand : FEICHENG YUNYU
Backhoe Capacity : 0.3m3	Main Transmission Type : Double Reduction
Max. Digging Depth : 4000mm	Final Reducer : Single Stage Final Reducer
Optional Digging Depth : 5000mm-5500mm	Rated Loader of Axle : 4/18.5t
(Digging boom telescopic)	Transmission System
Swing Angle of backhoe : 190o	Torque Converter — Model : 280
Max. Pulling Force : 39KN	Type : Single-stage Three Elements
Engine—Brand/Model : YUCHAI YCD4J22T-115 Turbo engine	Cooling Method : Oil-cooling Pressure Circulation
Type : In Line, Direct injection, Four-Stroke, Water Cooling	

Gearbox
Type — Fixed Shaft Power Transmission
Gears — Four Gears Ahead, Four Gears Astern
Max.Speed — 36KM/H
Tyre
Model — (F) 14-17.5 (R) 19.5L-24
Pressure of Front wheel — 0.22 Mpa
Pressure of Back Wheel — 0.22 Mpa
Brake System
Service Brake — Air Over Oil Caliper Brake External Type
Self-regulation Self-balance
Emergency Brake — Operation Power Implementing brake/
Manual Operation Power Terminating Brake
Hydraulic System
Pressure of Hydraulic System — 22Mpa
Digging Power of Excavator Grab — 46.5KN
Digging Power of Dipper — 31KN
The parameters or configuration are subject to change without notice.



PRODUCT PARAMETERS



Transmission System
Torque Converter
Model : 280
Type : Single-stage Three Elements
Cooling Method : Oil-cooling Pressure Circulation
Gearbox
Type : Fixed Shaft Power Transmission
Gears : Four Gears Ahead, Four Gears Astern
Max.Speed : 36KM/H
Tyre
Model : (F) 14-17.5 (R) 19.5L-24
Pressure of Front wheel : 0.22 Mpa
Pressure of Back Wheel : 0.22 Mpa
Brake System
Service Brake : Air Over Oil Caliper Brake/External Type
Self-regulation/Self-balance
Emergency Brake : Operation Power Implementing brake/
Manual Operation Power Terminating Brake
Hydraulic System
Pressure of Hydraulic System : 22Mpa
Digging Power of Excavator Grab : 46.5KN
Digging Power of Dipper : 31KN
The parameters or configuration are subject to change without notice.

Overall Operating Weight — 7800KG
Transport Dimension
mm L*W*H — 7600×2260×2890mm
Wheel base — 2250mm
Min. Ground Clearance — 300mm
Bucket Capacity — 1.3m3 (2200mm width)
Breakout Force — 38KN
Loading Lifting Capacity — 2500KG
Bucket Dumping Height — 2800mm
Bucket Dumping Distance — 1062mm
Backhoe Capacity — 0.3m3 (620mm width)
Max. Digging Depth — 4000mm
Optional Digging Depth — 5000mm-5500mm
(Digging boom telescopic)
Swing Angle of backhoe — 190o
Max. Pulling Force — 39KN
Engine
Brand/Model — YUCHAI YCD4J22T-115 Turbo engine
Type — In Line, Direct injection, Four-Stroke, Water Cooling
Rated Power — 85KW
Optional Engine — YCF36110-S500 81KW / 4BT3.9-C100 75KW /
4BT3.9-C125 92KW EPA4/F36 (FPT) 75KW / EPA4 QSF3.8
Steering System
Steering Angle — ±36 o
Min. turning radius — 6581mm
Pressure of the system — 12Mpa
Axle
Brand — FEICHENG YUNYU
Main Transmission Type — Double Reduction
Final Reducer — Single Stage Final Reducer
Rated Loader of Axle — 4/18.5t

TLS3CX

BACKHOE LOADER



DELUXE EDITION

PRODUCT PARAMETERS

HERACLES

Length(with bucket on ground):6450mm	Rated digging bucket capacity:0.3m ³ (620mm宽width)
Overall width (at stabilizer) :2500mm	Max. digging depth:4000mm
Load Bucket width:2300mm	Optional digging depth(telescopic digging boom):5000mm-5500mm
Height(To the top of the cab):3120mm	Max. digging radius:5345mm
Height(To the top of the digging pole):3940mm	Max. dumping height :3740mm
Wheel base:2335mm	Max. Digging Height:5470mm
Back wheel Tread:2139mm	Lifting force at Max. digging radius:1220kg
Rated load:2800KG	Brand/Model:YUCHAI YCD4J22T-125
Operating weight:8000KG	Type:In Line, Direct injection, Four-Stroke, Water Cooling
Rated bucket capacity:1.5m ³	Rated output:91(KW)
Max. dump clearance:2800mm	Optional engine:4BT3.9-C125(91KW) YCF36125-S500发动机92KW
Optional Max. dump clearance:3100mm	EPA4/ F36 (FPT) 90KW EPA4 QSF3.8
Dump reach:870mm	
Radius of turn (Outside of bucket) :5750mm	

Transmission System
Torque Converter — Model:315
Cooling type :Pressure oil circulating
Gearbox — Type:Synchromesh mechanical shift
Drive axle — Type:Four wheel drive
Four wheel steering Crab walk
Gear shift position:4 F, 4 R
(F/R) km/h:F1, 5km/h;F2, 10km/h;F3, 18km/h;F进4, 40km/h;
R1, 5km/h;R2, 10km/h;R3, 18km/h;R4, 32km/h;
Size of tire :16.9-28
The hydraulic system
Working pump discharge:63ml/r
Working pump pressure:22Mpa
Oil Capacity
The hydraulic oil tank:125L
Diesel fuel tank:125L
Packing Quantity (1*45HC) :2Units
The parameters or configuration are subject to change without notice.



TLS4CX

HERACLES

BACKHOE LOADER

Length(with bucket on ground):6450mm	Radius of turn (Outside of bucket) :5750mm
Overall width (at stabilizer) :2500mm	Rated digging bucket capacity:0.35m ³
Load Bucket width:2300mm	Max. digging depth:4000mm
Height(To the top of the cab):3120mm	Optional digging depth(telescopic digging boom):5000mm-5500mm
Height(To the top of the digging pole):3940mm	Max. digging radius:5345mm
Wheel base:2335mm	Max. dumping height :3740mm
Back wheel Tread:2139mm	Max. Digging Height:5470mm
Main Loading Technical Specification	Lifting force at Max. digging radius:1220kg
Rated load:2800KG	Brand/Model:YUCHAI YCD4J22T-125玉柴
Operating weight:9600KG	Type:In Line, Direct injection, Four-Stroke, Water Cooling
Rated bucket capacity:1.5m ³	Rated output:91(KW)
Max. dump clearance:2800mm	Optional engine:4BT3.9-C125(91KW) YCF36125-S500发动机92KW
Optional Max. dump clearance:3100mm	EPA4/ F36 (FPT) 90KW EPA4 QSF3.8
Dump reach:870mm	

Transmission System
Torque Converter — Model:320
Cooling type — Pressure oil circulating
Gearbox — Type — Synchromesh mechanical shift
Drive axle — Type — Four wheel drive
Four wheel steering Crab walk
Gear shift position — 4 F, 4 R
(F/R) km/h — F1, 5km/h;F2, 10km/h;F3, 18km/h;F进4, 40km/h;
R1, 5km/h;R2, 10km/h;R3, 18km/h;R4, 32km/h;
Size of tire — 16.9-28
The hydraulic system
Working pump discharge — 63ml/r
Working pump pressure — 22Mpa
Oil Capacity
The hydraulic oil tank — 125L
Diesel fuel tank — 125L
Packing Quantity (1*45HC) — 2Units
The parameters or configuration are subject to change without notice.



WZ10-08

**BACKHOE
LOADER**

PRODUCT PARAMETERS

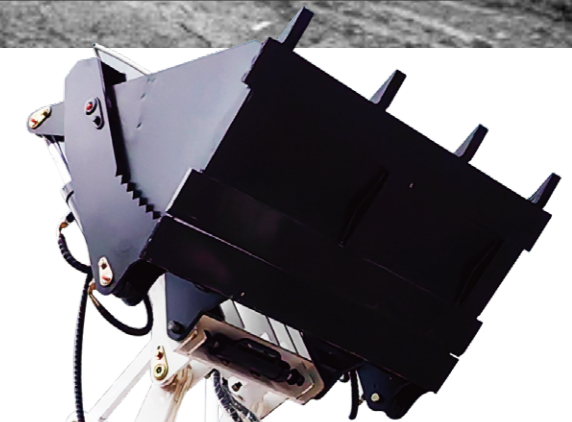
Engine — Brand/Model : COPY YANMAR
Type: Vertical, in-line, water cooling, 3-cylinder
Rated power: 19KW
Transmission system
Type: Closed Hydrostatic (pump + motor)
Pump type: Variable displacement piston
Drive type: Four wheel drive
Max. speed: 20km/h
Hydraulic system
Pump maximum flow: 42L/min
Pump maximum pressure: 200bar
Electric system
System Voltage: 24V Alternator: 65Ah Battery: 60Ah
Tyre
Tyre model: 26x12.00-12 Optional Tyre: 31x15.5x15
Filling capacity
Hydraulic oil tank: 45L Fuel tank: 45L Engine oil: 7.1L

PRODUCT PARAMETERS

Rated load — 800kg
Operation weight — 2380kg
Shovel width — 1400mm
Bucket capacity — 0.4cbm
Max. grade ability — 30°
Min. ground clearance — 200mm
Wheelbase — 1780mm
Steering angle — 46°
Max. dump height — 2286mm
Max. lifting height — 3536mm
Hinge pin height — 2900mm
Dump distance — 390mm
Overall dimension (L*W*H) — 5300x1500x2500mm
Min. turning radius over tyre — 3000mm
Track base — 1030mm
Dumping angle — 45°
Function of leveling automatic — Yes
Digging depth — 2116mm
Digging height — 2927mm
Digging Radius — 3000mm
Digging bucket capacity — 0.1cbm

Brand/Model : CHANGCHAI ZN390BT-25G
Type: Vertical, in-line, water cooling, 3-cylinder
Rated power: 18.4KW
Transmission system
Type: Torque Converter+Gearbox
Pump type: High-pressure gear pump
Drive type: Four wheel drive
Max. speed: 20km/h
Hydraulic system
Pump maximum flow: 42L/min
Pump maximum pressure: 200bar
Electric system
System Voltage: 24V Alternator: 65Ah Battery: 60Ah
Tyre
Tyre model: 12-16.5 Optional Tyre: 31x15.5x15
Filling capacity
Hydraulic oil tank: 45L Fuel tank: 45L Engine oil: 7.1L

Rated load — 600kg
Operation weight — 2250kg
Shovel width — 1060mm
Bucket capacity — 0.4cbm
Max. grade ability — 30°
Min. ground clearance — 200mm
Wheelbase — 1780mm
Steering angle — 46°
Max. dump height — 2286mm
Max. lifting height — 3536mm
Hinge pin height — 2900mm
Dump distance — 390mm
Overall dimension (L*W*H) — 5300x1300x2500mm
Min. turning radius over tyre — 3000mm
Track base — 1030mm
Dumping angle — 45°
Function of leveling automatic — Yes
Digging depth — 2116mm
Digging height — 2927mm
Digging Radius — 3000mm
Digging bucket capacity — 0.1cbm



HERACLES



HERACLES



WZ15-10

BACKHOE LOADER

Overall Operating Weight — 3500kg
 mm L*W*H — 6800x1800x2800mm
 Min. Ground Clearance — 300mm
 Bucket Capacity — 0.6m³
 Loading Lifting Capacity — 1000-1500KG
 Bucket Dumping Height — 2900mm
 Backhoe Capacity — 0.1m³
 Max. Digging Depth — 2500mm
 Axle track — 2000mm
 Wheelbase — 1550mm

Engine Model: YUNNEI YN25GB
 Type: In Line, Direct injection, Four-Stroke, Water Cooling
 Rated Power: 37KW
 Optional engine: 4G33TC-60L 44.1KW EPA4/KDI1903TCR 42KW
 EPA4 QSF2.845KW
 Steering System
 Steering Angle: ±35°
 Min. turning radius: 4600mm
 Pressure of the system: 12Mpa
 Axle — Model: Isuzu drive axle
 Drive type: Four wheel drive
 Transmission System
 Torque Converter Model: 240
 Cooling Method: Oil-cooling Pressure Circulation
 Gearbox
 Type: Power Transmission
 Gears: Four Gears Ahead, Four Gears Astern
 Max. Speed: 25Km/h
 Tyre Model: 20.5/70-16
 Service Brake: Drum brake
 Emergency Brake: Operation Power Implementing brake
 Manual Operation Power Terminating Brake
 Pressure of Hydraulic System: 22Mpa
 The parameters or configuration are subject to change without notice.



Engine Model: YUNNEI YN27GB
 Type: In Line, Direct injection, Four-Stroke, Water Cooling
 Rated Power: 42KW
 Optional engine: 4G33TC-60L 44.1KW
 EPA4/KDI1903TCR 42KW EPA4 QSF2.8 45KW
 Steering System
 Steering Angle: ±35°
 Min. turning radius: 4600mm Pressure of the system: 12Mpa
 Axle Model: Wheel hub reducer drive axle
 Drive type: Four wheel drive
 Transmission System
 Torque Converter Model: 265
 Cooling Method: Oil-cooling Pressure Circulation
 Gearbox Type: Power Transmission
 Gears: Four Gears Ahead, Four Gears Astern
 Max. Speed: 28Km/h Tyre Model: 23.5/70-16
 Brake System
 Service Brake: Air Over Oil Caliper Brake External Type
 Self-regulation Self-balance
 Emergency Brake: Operation Power Implementing brake
 Manual Operation Power Terminating Brake
 Hydraulic System
 Pressure of Hydraulic System: 22Mpa
 The parameters or configuration are subject to change without notice.

Overall Operating Weight — 3800kg
 mm L*W*H — 6800x1900x2800mm
 Min. Ground Clearance — 300mm
 Bucket Capacity — 0.8m³
 Loading Lifting Capacity — 1800KG
 Bucket Dumping Height — 2900mm
 Backhoe Capacity — 0.18m³
 Max. Digging Depth — 2500mm
 Axle track — 2000mm
 Wheelbase — 1550mm

WZ25-18

BACKHOE LOADER



WZ28-20

**BACKHOE
LOADER**

Engine Model: YUNNEI YN33GBZ Turbo Engine
Type: In Line, Direct injection, Four-Stroke, Water Cooling
Rated Power: 65KW
Optional engine : 4G33TC-75L 55.2KW EPA4/ KDI2504TCR 55KW
EPA4 55KW QSF2.8 EPA4 QSF3.8 75KW 4BT3.9-C100
YCF36100-S500 74KW
Steering System
Steering Angle: ±40° Min. turning radius: 4600mm
Pressure of the system: 12Mpa
Axle Type: Four wheel drive
Final Reducer: Single Stage Final Reducer
Transmission System
Torque Converter Model: 265
Type: Single-stage Three Elements
Cooling Method: Oil-cooling Pressure Circulation
Gearbox Type: Power Transmission
Optional Gears: Four Gears Ahead, Four Gears Astern
Max. Speed: 30Km/h
Tyre Model: 16/70-20
Brake System Service Brake: Air Over Oil Caliper Brake
External Type Self-regulation Self-balance
Emergency Brake: Operation Power Implementing brake
Manual Operation Power Terminating Brake
Hydraulic System Pressure of Hydraulic System: 22Mpa
The parameters or configuration are subject to change without notice.

Overall Operating Weight — 5000KG
L*W*H — 7600×2100×2900mm
Wheel base — 2250mm
Min. Ground Clearance — 300mm
Bucket Capacity — 1m ³
Breakout Force — 38KN
Loading Lifting Capacity — 2000KG
Bucket Dumping Height — 3500mm
Backhoe Capacity — 0.25m ³
Max. Digging Depth — 2700mm
Swing Angle of backhoe — 170°
Max. Pulling Force — 39KN
Wheel tread — 2470mm
Wheel base — 1600mm



HERACLES

PRODUCT PARAMETERS

Overall Operating Weight — 6000Kg
L*W*H — 7600×2100×2900mm
Wheel base — 2250mm
Min. Ground Clearance — 300mm
Bucket Capacity — 1.3m ³
Breakout Force — 38KN
Loading Lifting Capacity — 2500KG
Bucket Dumping Height — 3500mm
Backhoe Capacity — 0.3m ³
Max. Digging Depth — 4000mm
Optional Max. Digging Depth — 5000mm-5500mm
(Digging boom telescopic)
Swing Angle of backhoe — 170°
Max. Pulling Force — 39KN
Wheel tread — 2470mm
Wheel base — 1600mm

Engine Model : YUNNEI YN38GBZ Turbo Engine
Type : In Line, Direct injection, Four-Stroke, Water Cooling
Rated Power : 76KW
Optional engine : 4G33TC-75L 55.2KW EPA4/ KDI2504TCR 55KW
EPA4 55KW QSF2.8 EPA4 QSF3.8 75KW 4BT3.9-C100
YCF36100-S500 74KW
Steering System
Steering Angle : ±40° Min. turning radius : 4600mm
Pressure of the system : 12Mpa
Axle Type : Four wheel drive
Final Reducer : Single Stage Final Reducer
Transmission System
Torque Converter
Model : 265 Type : Single-stage Three Elements
Cooling Method : Oil-cooling Pressure Circulation
Gearbox Type : Power Transmission
Optional Gears : Four Gears Ahead, Four Gears Astern
Max. Speed : 30Km/h Tyre Model : 16/70-20
Brake System
Service Brake : Air Over Oil Caliper Brake External Type
Self-regulation Self-balance
Emergency Brake : Operation Power Implementing brake
Manual Operation Power Terminating Brake
Hydraulic System
Pressure of Hydraulic System : 22Mpa
The parameters or configuration are subject to change without notice.



HERACLES

COMFORT VERSION

WZ30-25

**BACKHOE
LOADER**

BACKHOE LOADER

WZ30-25

**BACKHOE
LOADER**

DELUXE EDITION



HERACLES

Engine Model : YUNNEI YN38GBZ turbo engine
Type : Inline, direct injection, four-stroke, liquid cooled
Rated power : 76KW
Optional engine : 4G33TC-75L 55.2KW EPA4/ KDI2504TCR 55KW EPA4 55KW QSF2.8 EPA4 QSF3.8 75KW 4BT3.9-C100 YCF36100-S500 74KW
Steering system Type : Articulated hydraulic steering
Steering angle : 36° Minimum turning radius : 3660mm
System pressure : 16Mpa
Transmission system
Torque converter : 280
Type of gearbox : Fixed shaft power shift transmission
Gear : 2gears ahead,2gears reverse Maximum speed : 30KM/H
Drive axle
Drive type : Four-wheel drive
Wheel reduction type : Single stage planetary type
Tire size : 16/17-20
Front wheel pressure : 0.22Mpa Rear wheel pressure : 0.22Mpa
Brake System
Service braking : Air over hydraulic caliper disc brake parking
Emergency brake : Flexible shaft operated disc brake
Hydraulic system
Pressure of Hydraulic System : 22Mpa
Packing Quantity (1*40HC) : 2Units(拆轮胎/挖臂/铲斗)
The parameters or configuration are subject to change without notice.

PRODUCT PARAMETERS

Total operating weight — 7200Kg
Length*width*height(mm) — 7600x2260x2900
Wheel base — 2250mm
Axle track — 1700mm
Minimum ground clearance — 300m
Loading bucket capacity — 1.3m ³
Digging up capacity — 38KN
Loading lift capacity — 2500Kg
Bucket discharge height — 2742mm
Bucket discharge distance — 1062mm
Backhoe bucket capacity — 0.3m ³
Backhoe discharge height — 3878mm
Maximum digging depth — 4000mm
Optional Digging Depth — 5000mm-5500mm (Digging boom telescopic)
Bucket slewing angle — 180°
Bucket stick revolving radian — 180°
Maximum puling force — 39KN

WZ40-28

**BACKHOE
LOADER**

HERACLES

Engine Model : YUCHAI YCD4J22T-115 Turbo
Type : Inline, direct injection, four-stroke, liquid cooled
Rated power : 85KW
Optional engine : YCF36110-S500 81KW EPA4/ FPT 90KW 4BT3.9-C100 75KW 4BT3.9-C125 92KW EPA4 QSF3.8
Steering system
Type : Articulated hydraulic steering
Steering angle : 36° Minimum turning radius : 3660mm
System pressure : 16Mpa
Transmission system
Torque converter : 280
Type of gearbox : Fixed shaft power shift transmission
Gear : 2gears ahead,2gears reverse
Maximum speed : 30KM/H
Drive axle
Drive type : Four-wheel drive
Wheel reduction type : Single stage planetary type
Tire size : 16/17-24
Front wheel pressure : 0.22Mpa Rear wheel pressure : 0.22Mpa
Service braking : Air over hydraulic caliper disc brake parking
Emergency brake : Flexible shaft operated disc brake
Hydraulic system
Pressure of Hydraulic System : 22Mpa
Packing Quantity (1*40HC) : 2Units
The parameters or configuration are subject to change without notice.

PRODUCT PARAMETERS

Total operating weight — 7600Kg
Length*width*height(mm) — 7600x2260x3000
Wheel base — 2250mm
Axle track — 1700mm
Minimum ground clearance — 300m
Loading bucket capacity — 1.5m ³
Digging up capacity — 38KN
Loading lift capacity — 2800KG
Bucket discharge height — 2742mm
Bucket discharge distance — 1062mm
Backhoe bucket capacity — 0.3m ³
Backhoe discharge height — 3878mm
Maximum digging depth — 4000mm
Optional Digging Depth — 5000mm-5500mm (Digging boom telescopic)
Bucket stick revolving radian — 180°
Maximum puling force — 39KN

COMFORT VERSION



WZ40-28

**BACKHOE
LOADER**

HERACLES

Engine Model : YUCHAI YCD4J22T-115 Turbo
Type : In Line, Direct injection, Four-Stroke, Water Cooling
Rated Power : 85KW
Optional engine : YCF36110-S500 81KW 4BT3.9-C100 75KW 4BT3.9-C125 92KW EPA4/ F36 (FPT) 75KW EPA4 QSF3.8
Steering System
Steering Angle : ±40°
Min. turning radius : 4600mm Pressure of the system : 12Mpa
Axle Type : Four wheel drive
Final Reducer : Single Stage Final Reducer
Transmission System
Torque Converter Model : 280
Type : Single-stage Three Elements
Cooling Method : Oil-cooling Pressure Circulation
Gearbox Type : Power Transmission
Optional Gears : Four Gears Ahead, Four Gears Astern
Max. Speed : 35km/h Tyre Model : 16/70-24
Brake System
Service Brake : Air Over Oil Caliper Brake External Type
Self-regulation Self-balance
Emergency Brake : Operation Power Implementing brake
Manual Operation Power Terminating Brake
Hydraulic System
Pressure of Hydraulic System : 22Mpa
The parameters or configuration are subject to change without notice.

PRODUCT PARAMETERS

Overall Operating Weight —— 6500Kg
L*W*H —— 7600×2200×3100mm
Wheel base —— 2250mm
Min. Ground Clearance —— 300mm
Bucket Capacity —— 1.5m ³
Breakout Force —— 38KN
Loading Lifting Capacity —— 2800KG
Bucket Dumping Height —— 3600mm
Backhoe Capacity —— 0.3m ³
Max. Digging Depth —— 4000mm
Optional Max. Digging Depth —— 5000mm-5500mm (Digging boom telescopic)
Swing Angle of backhoe —— 180°
Max. Pulling Force —— 39KN
Wheel tread —— 2470mm
Wheel base —— 1600mm

WZ40-30

**BACKHOE
LOADER**

HERACLES

Engine Model : YUCHAI YCD4J22T-125
Type : Inline, direct injection, four-stroke, liquid cooled
Rated power : 91KW
Optional engine : YCF36125-S500 92KW EPA4 QSF3.8 6BT5.9-C150 110KW EPA4/ F36 (FPT) 90KW
Steering system Type : Articulated hydraulic steering
Steering angle : 36°
Minimum turning radius : 3660mm
System pressure : 16Mpa
Transmission system
Torque converter model : 320
Type of gearbox : Fixed shaft power shift transmission
Gear : 2gears ahead,2gears reverse
Maximum speed : 30km/h
Drive axle
Drive Axle Model : 28 Axle Drive type : Four-wheel drive
Wheel reduction type : Single stage planetary type
Tire size : 16/70-24
Front wheel pressure : 0.22Mpa Rear wheel pressure : 0.22Mpa
Service braking : Air over hydraulic caliper disc brake parking
Emergency brake : Flexible shaft operated disc brake
Hydraulic system
Pressure of Hydraulic System : 22Mpa
Packing Quantity (1*40HC) : 2Units
The parameters or configuration are subject to change without notice.

PRODUCT PARAMETERS

Total operating weight —— 8000Kg
Length*width*height(mm) —— 7600x2260x3000
Wheel base —— 2250mm
Axle track —— 1700mm
Minimum ground clearance —— 300mm
Loading bucket capacity —— 1.7m ³
Digging up capacity —— 38KN
Loading lift capacity —— 3000Kg
Bucket discharge height —— 2742mm
Bucket discharge distance —— 1062mm
Backhoe bucket capacity —— 0.35m ³
Backhoe discharge height —— 3878mm
Maximum digging depth —— 4000mm
Optional Digging Depth —— 5000mm-5500mm (Digging boom telescopic)
Bucket slewing angle —— 180°
Bucket stick revolving radian —— 180°
Maximum pulling force —— 39KN

COMFORT VERSION



WZ40-30

**BACKHOE
LOADER**

HERACLES



PRODUCT PARAMETERS

Overall Operating Weight	8000Kg
mm L*W*H	7800×2380×3300
Wheel base	2750mm
Track base	1650mm
Min. Ground Clearance	300mm
Bucket Capacity	1.7m ³
Breakout Force	38KN
Loading Lifting Capacity	3000KG
Bucket Dumping Height	3600mm
Bucket Dumping Distance	1062mm
Backhoe Capacity (Width)	0.35m ³
Max. Digging Depth	4000mm
Optional Digging Depth (Digging boom telescopic)	5000mm-5500mm
Swing Angle of Excavator Grab	180°
Max. Pulling Force	39KN

Engine Brand/Model	YUCHAI YCD4J22T-125涡轮增压
Type	In Line, Direct injection, Four-Stroke, Water Cooling
Rated Power	91KW
Optional engine	EURO5 YUCHAI or FIAT EPA4 FIAT or CUMMINS
Steering System	
Model of Steering Device	250
Steering Angle	±36°
Min. turning radius	5018mm
Pressure of the system	12Mpa
Drive Axle Model	28 Axle
Main Transmission Type	Double Reduction
Final Reducer	Single Stage Final Reducer
Transmission System	
Torque Converter	
Model	320
Type	Single-stage Three Elements
Max. Efficiency	84.4%
Inlet Pressure	0.4Mpa—0.55 Mpa
Outlet Pressure	1.2Mpa—1.5 Mpa
Cooling Method	Oil-cooling Pressure Circulation
Gearbox Type	Fixed Shaft Power Transmission
Oil Pressure of Clutch	1373Kpa—1569 Kpa
Gears	Four Gears Ahead, Four Gears Astern
Max.Speed	38Km/h
Tyre Model	16/70-24
Pressure of Front wheel	0.22 Mpa
Pressure of Back Wheel	0.22 Mpa
Brake System	
Service Brake	Air Over Oil Caliper Brake External Type
Self-regulation	Self-balance
Emergency Brake	Operation Power Implementing brake
Manual Operation Power Terminating Brake	
Hydraulic System	
Pressure of Hydraulic System	22Mpa
The parameters are subject to change without notice	



DELUXE EDITION

TELESCOPIC LOADER

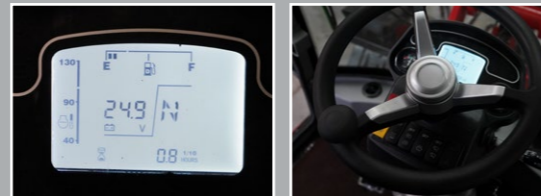
TL1500



HERACLES

PRODUCT PARAMETERS

- 1.0 Engine
 - (1) Brand/Model: Yunnei YN25GB
 - (2) Type: In-line arrangement, water-cooled, four cylinder, diesel engine
 - (3) Rated Power: 37KW
 - (4) Optional engine: EURO5 CHANGCHAI/YUNNEI EPA4 KOHLER/CUMMINS
- 2.0 Overall Dimensions
 - (1) Overall Length: 5800mm
 - (2) Overall Width: 1800mm
 - (3) Overall Height: 2700mm
 - (4) Max. Discharge height: 4400mm
 - (5) Min. Discharge height: 3400mm
- 3.0 Transmission System: Gearbox + Hydraulic converter + Drive shaft + Isuzu axle
- 4.0 Bucket:
 - (1) Capacity: 0.65 m³
 - (2) Type: Heavy-duty bolt on teeth
 - (3) Max. Load: 1500kg including bucket or attachment



- 5.0 Operating Specifications
 - (1) Steering System: Articulated hydraulic steering
 - (2) Driving System: Four wheel drive
 - (3) Hydraulic quick release: Yes
 - (4) Mechanical pilot joystick: Yes
 - (5) Steady rise: Yes
- 6.0 Brake System
 - (1) Service Brake: Four wheel disc brake
 - (2) Parking Brake: Disc brake
- 7.0 Tyre
 - (1) Model: 20.5-16
 - (2) Size: Width: 300mm Diameter: 920mm
 - (3) Optional Model: 31*15.5-15 tubeless tires
- 8.0 Wheel base: 2500mm
- 9.0 Track: 1500mm
- 10. System pressure: 16Mpa
- 11. Weight: 4200KG

TELESCOPIC LOADER

TL1800

HERACLES



PRODUCT PARAMETERS

- 1.0 Engine
 - (1) Brand/Model: Yunnei YN27GB
 - (2) Type: In-line arrangement, water-cooled, four cylinder, diesel engine
 - (3) Rated Power: 42KW
 - (4) Optional engine: EURO5 CHANGCHAI/YUNNEI EPA4/EURO5 KOHLER EPA4 CUMMINS
- 2.0 Transmission System: Gearbox + Hydraulic converter + Drive shaft + Hub reduction axle (Disc brake)
- 3.0 Bucket
 - (1) Capacity: 0.75 m³
 - (2) Type: Heavy-duty bolt on teeth
 - (3) Max. Load: 1800kg including bucket or attachment
- 4.0 Operating Specifications
 - (1) Steering System: Articulated hydraulic steering
 - (2) Driving System: Four wheel drive
 - (3) Hydraulic quick release: Yes
 - (4) Mechanical pilot joystick: Yes
 - (5) Steady rise: Yes

- 5.0 Brake System
 - (1) Service Brake: Four wheel disc brake
 - (2) Parking Brake: Disc brake
- 6.0 Tyre
 - (1) Model: 23.5/70-16
 - (2) Size: Width: 330mm Diameter: 920mm
 - (3) Optional model: 14-17.5 tubeless tires
- 7.0 Wheel base: 2500mm
- 8.0 Track: 1550mm
- 9. System pressure: 16Mpa
- 10. Weight: 4500KG

- Overall Dimensions
 - (1) Overall Length: 5800mm
 - (2) Overall Width: 1900mm
 - (3) Overall Height: 2680mm
 - (4) Max. Discharge height: 4400mm
 - (5) Min. Discharge height: 3400mm

HERACLES

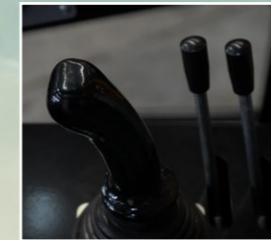
TELESCOPIC LOADER

TL2000

HERACLES

TELESCOPIC LOADER

TL2500



5.0 Brake System

- (1) Service Brake: Four wheel disc brake
- (2) Parking Brake: Disc brake

6.0 Tyre

- (1) Model: 16/70-20 Herringbone Tyre
- (2) Size: Width: 380mm Diameter: 1075mm
- 7.0 Wheel base: 2550mm
- 8.0 Track: 1600mm
- 9. System pressure: 20Mpa
- 10. Weight: 5500KG

Overall Dimensions

- (1) Overall Length — 6500mm
- (2) Overall Width — 2000mm
- (3) Overall Height — 2860mm
- (4) Max. Discharge height — 4400mm
- (5) Min. Discharge height — 3400mm

1.0 Engine

- (1) Brand/Model: YUNNEI YN33GBZ
- (2) Type: In-line arrangement, water-cooled, four cylinder, turbocharged diesel engine
- (3) Rated Power: 65KW
- (4) Optional engine:
CUMMINS 4BT3.9-C100 EURO5 55KW CHANGCHAI
EPA4/EURO5 KOHLER EPA4 CUMMINS

2.0 Transmission System:

Gearbox + Hydraulic converter + Drive shaft + Hub reduction axle

3.0 Bucket

- (1) Capacity: 1m³
- (2) Max. Load: 2000kg including bucket or attachment

4.0 Operating Specifications

- (1) Steering System: Articulated hydraulic steering
- (2) Driving System: Four wheel drive
- (3) Hydraulic quick release: Yes
- (4) Mechanical pilot joystick: Yes
- (5) Steady rise: Yes

1.0 Engine

- (1) Brand/Model: YUNNEI YN38GBZ
- (2) Type: In-line arrangement, water-cooled, four cylinder, turbocharged diesel engine
- (3) Rated Power: 76KW
- (4) Optional engine:
CUMMINS 4BT3.9-C100 EURO5 55KW CAHNGCHAI
EURO5 74KW YUCHAI EPA4/EURO5 KOHLER/FPT EPA4 CUMMINS

2.0 Transmission System:

Gearbox + hydraulic converter + drive shaft + hub reduction axle

3.0 Bucket

- (1) Capacity: 1.2m³
- (2) Width: 2100mm
- (3) Type: Heavy-duty bolt on teeth
- (4) Max. Load: 2500kg including bucket or attachment

4.0 Operating Specifications

- (1) Steering System: Articulated hydraulic steering
- (2) Driving System: Four wheel drive
- (3) Hydraulic quick release: Yes
- (4) Mechanical pilot joystick: Yes
- (5) Steady rise: Yes

5.0 Brake System

- (1) Service Brake: Four wheel disc brake
- (2) Parking Brake: Disc brake

6.0 Tyre

- (1) Model: 16/70-24 Herringbone tyre
- (2) Size: Width: 410mm Diameter: 1175mm
- 7.0 Wheel base: 2550mm
- 8.0 Track: 1600mm
- 9. System pressure: 20Mpa
- 10. Weight: 6000KG

Overall Dimensions

- (1) Overall Length — 6500mm
- (2) Overall Width — 2000mm
- (3) Overall Height — 2860mm
- (4) Max. Discharge height — 4370mm
- (5) Min. Discharge height — 3350mm
- (6) Max. Bucket hinge pin height — 5150mm
- (7) Max. Bucket lifting height: — 5940mm

TELESCOPIC LOADER

TL3000

HERACLES



- 1.0 Engine**
 (1) Brand/Model: YUCHAI YCD4J22T-115
 (2) Type: In-line arrangement, water-cooled, four cylinder, turbocharged diesel engine
 (3) Rated Power: 85KW
 (4) Optional engine:
 CUMMINS 4BT3.9-C100/4BT3.9-C125 EURO5 YUCHAI/YUNNEI
 EPA4/EURO5 FPT EPA4 CUMMINS
2.0 Transmission System:
 Gearbox + Hydraulic converter + Drive shaft + Hub reduction axle
3.0 Bucket
 (1) Capacity: 1.5m³
 (2) Width: 2200mm
 (3) Type: Heavy-duty bolt on teeth
 (4) Max. Load: 3000kg including bucket or attachment
4.0 Operating Specifications
 (1) Steering System: Articulated hydraulic steering
 (2) Driving System: Four wheel drive
 (3) Hydraulic quick release: Yes
 (4) Mechanical pilot joystick: Yes
 (5) Steady rise: Yes



- 5.0 Brake System**
 (1) Service Brake: Four wheel disc brake
 (2) Parking Brake: Disc brake
6.0 Tyre
 (1) Model: 16/70-24 tire
 (2) Size: Width: 410mm Diameter: 1175mm
 (3) Optional Tire: G2 pattern 17.5-25 tire G2
 Width: 440mm Diameter: 1280mm
 7.0 Wheel base: 2800mm 8.0 Track: 1750mm
 9. System pressure: 20Mpa 10. Weight: 7000KG

- Overall — Dimensions**
 (1) Overall Length — 7200mm
 (2) Overall Width — 2200mm
 (3) Overall Height — 3000mm
 (4) Max. Discharge height — 5000mm
 (5) Min. Discharge height — 3800mm
 (6) Optional Max. discharge height: — 7000mm
 9000mm (Must have legs and three arms)

TELESCOPIC LOADER

TL3500

HERACLES



PRODUCT PARAMETERS

- 1.0 Engine**
 (1) Brand/Model: WEICHAI / WP6G125E22
 (2) Type: In-line arrangement, water-cooled, six cylinder, turbocharged diesel engine
 (3) Rated Power: 92KW
 (4) Optional engine:
 6BT5.9-C130 CUMMINS EURO5 YUCHAI/YUNNEI
 EPA4/EURO5 FPT EPA4 CUMMINS
2.0 Transmission System:
 Gearbox + hydraulic converter + drive shaft + hub reduction axle
3.0 Bucket
 (1) Capacity: 1.5m³
 (2) Width: 2300mm
 (3) Type: Heavy-duty bolt on teeth
 (4) Max. Load: 3500kg including bucket or attachment
4.0 Operating Specifications
 (1) Steering System: Articulated hydraulic steering
 (2) Driving System: Four wheel drive
 (3) Hydraulic quick release: Yes
 (4) Mechanical pilot joystick: Yes
 (5) Steady rise: Yes

- 5.0 Brake System**
 (1) Service Brake: Four wheel disc brake
 (2) Parking Brake: Disc brake
6.0 Tyre
 (1) Model: G2 pattern 17.5-25 Tyre
 (2) Size: Width: 440mm Diameter: 1280mm
 7.0 Wheel base: 2800mm
 8.0 Track: 1750mm
 9.0 System pressure: 20Mpa
 10.0 Weight: 8000KG

- Overall — Dimensions**
 (1) Overall Length — 7500mm
 (2) Overall Width — 2280mm
 (3) Overall Height — 3200mm
 (4) Max. Discharge height — 5300mm
 (5) Min. Discharge height — 3900mm
 (6) Optional Max. discharge height: — 7000mm
 9000mm (Must have legs and three arms)



TELESCOPIC LOADER

TL4000

PRODUCT PARAMETERS

HERACLES

5.0 Brake System

- (1) Service Brake: Four wheel disc brake
- (2) Parking Brake: Disc brake

6.0 Tyre

- (1) Model: G2 pattern 17.5-25 Tyre
- (2) Size: Width: 440mm Diameter: 1280mm

7.0 Wheel base: 2800mm

8.0 Track: 1750mm

9.0 System pressure: 20Mpa

10.0 Weight: 8000KG

Overall — Dimensions

- (1) Overall Length — 7500mm
- (2) Overall Width — 2280mm
- (3) Overall Height — 3200mm
- (4) Max. Discharge height — 5300mm
- (5) Min. Discharge height — 3900mm
- (6) Optional Max. discharge height: — 7000mm
9000mm (Must have legs and three arms)



1.0 Engine

- (1) Brand/Model: WEICHAI / WP6G125E22
- (2) Type: In-line arrangement, water-cooled, six cylinder, turbocharged diesel engine
- (3) Rated Power: 92KW
- (4) Optional engine:

6BT5.9-C130 CUMMINS	EURO5 YUCHAI/YUNNEI
EPA4/EURO5 FPT	EPA4 CUMMINS

2.0 Transmission System:

Gearbox + hydraulic converter + drive shaft + hub reduction axle

3.0 Bucket

- (1) Capacity: 1.5m³
- (2) Width: 2300mm
- (3) Type: Heavy-duty bolt on teeth
- (4) Max. Load: 3500kg including bucket or attachment

4.0 Operating Specifications

- (1) Steering System: Articulated hydraulic steering
- (2) Driving System: Four wheel drive
- (3) Hydraulic quick release: Yes
- (4) Mechanical pilot joystick: Yes
- (5) Steady rise: Yes

H 160 | H SERIES LOADER

WHEEL LOADER WITH SIMPLE SHED GASOLINE ENGINE

HERACLES



PRODUCT PARAMETERS

Wheel Base: 1580mm
Tread: 930mm
Tyre Model: 23*8.5-12
Engine Brand: RUNTONG
Model: R825D
Emission standard: Euro5 and EPA
Type: Double cylinder, four stroke
Number of Cylinders : 2
Fuel: Gasoline
Rate Power: 20.5KW/3600rpm
Displacement: 824ml
Transmission Type: Automatic
Gear Number: F2/R2
Drive Type: Four Wheel Drive
1*20HC Packing Quantity: 4Units
Nearest port: Qingdao port

Item Parameter
Weight — 1250kg
Length — 2840mm
Width — 1100mm
Height — 2270mm
Lift Height — 2800mm
Discharge Height — 2100mm
Bucket Capacity — 0.3m ³
Rate Load — 400Kg



H 180 | H SERIES LOADER

WHEEL LOADER—HYDROSTATIC

HERACLES

PRODUCT PARAMETERS

Operation weight: 2200kg	Track base: 872mm
Rated load: 800kg	Dumping angle: 45°
Max. load: 1000kg	Function of leveling automatic: Yes
Max. Shovel width: 1150mm	Engine brand/model: CHANGCHAI 3M78
Bucket capacity: 0.3cbm	Type: Water cooled
Max. grade ability: 30°	Rated Power: 17.75kw
Min. ground clearance: 200mm	Rated Speed: 2600r/min
Wheelbase: 1540mm	Number of cylinders: 3
Steering angle: 49°	Emission standard: EURO5
Max. dump height: 2167mm	Optional engine: EPA4/EURO5 Perkins or Kubota or Yanmar engine
Load over height: 2634mm	Type: Closed hydrostatic
Hinge pin height: 2900mm	Pump type: Piston pump
Dump distance: 920mm	Drive type: Independent wheel motors
Overall dimension (L*W*H): 4300x1160x2150mm	Classic angle oscillation: 7.5 each way
Min. turning radius over shovel: 2691mm	Max. speed: 20km/h
Min. turning radius over tyre: 2257mm	Pump type: Gear

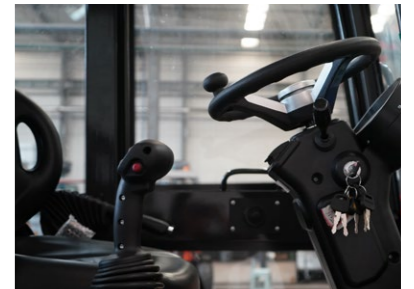


WHEEL LOADER

Engine	Brand	XINCHAI/3B11Y51P254(EURO5 emission)
	Type	Vertical,In-line,Water cooling,3-cylinder diesel engine
	Rated power	18.5KW
	Optional engine	KUBOTA D1703(EPA4/EURO5 emission,3-cylinder) KUBOTA V1505 (EPA4/EURO5 emission,4-cylinder)
Transmission system	Type	Hydrostatic(Piston pump+motor)
	Gear shift	1 gears ahead,1 gear astern
Hydraulic system	Working pressure	16Mpa
	Working flow	32ml/r
	Walking flow	16ml/r
Tank capacity	Hydraulic tank capacity	60L
	Fuel tank capacity	60L
Steering system	Type	Hydraulic steering
	Steering angle	35°
Tires	Standard tires	31*15.5-15
	Optional tires	400/60-15.5
Packing quantity	2Units (1*20HQ) 5Units (1*40HC)	



HERACLES



H 280 | H SERIES LOADER

WHEEL LOADER—HYDROSTATIC

HERACLES



Overall weight(kg)	— 2500
L×W×H(mm)	— 4500X1600X2600
Bucket capacity(m3)	— 0.5
Wheelbase(mm)	— 1860
Track base(mm)	— 1170
Rated load(kg)	— 1000
Max. load(kg)	— 1200
Lifting height(mm)	— 3500
Max. dump height (mm)	— 2200
Min. turning radius(mm)	— 2150
Max. turning radius(mm)	— 3850
Max. speed(km/h)	— 20
Heater	— Yes
Reverse image	— Yes

H 280 | H SERIES LOADER

WHEEL LOADER

Engine	Brand	CHANGCHAI/ZN390Q
	Type	Vertical,In-line,Water cooling,3-cylinder diesel engine
	Rated power	25KW
	Optional engine	EPA4/EURO5 KOHLER/YANMAR engine
Transmission system	Type	Torque converter + gearbox + drive shaft + drive axle
	Gear shift	2 gears ahead,2 gear astern
Hydraulic system	Working pressure	16Mpa
	Working flow	32ml/r
	Walking flow	16ml/r
Tank capacity	Hydraulic tank capacity	60L
	Fuel tank capacity	60L
Steering system	Type	Hydraulic steering
	Steering angle	35°
Tires	Standard tires	31*15.5-15
	Optional tires	400/60-15.5
Packing quantity	2Units (1*20HQ) 5Units (1*40HC)	

Overall weight(kg)	— 2500
L×W×H(mm)	— 4500X1600X2600
Bucket capacity(m3)	— 0.5
Wheelbase(mm)	— 2240
Track base(mm)	— 1170
Rated load(kg)	— 1000
Max. load(kg)	— 1200
Lifting height(mm)	— 3500
Max. dump height (mm)	— 2200
Min. turning radius(mm)	— 2150
Max. turning radius(mm)	— 3850
Max. speed(km/h)	— 20
Heater	— Yes
Reverse image	— Yes

WHEEL LOADER

H 360

H SERIES
LOADER

HERACLES

Engine	Brand/Model	YUNNEI/YN27GB
	Type	Vertical, in-line, water cooling, 4-cylinder
	Rated power	42KW
	Optional brand	EURO5 CHANGCHAI engine EPA4 KOHLER/CUMMINS engine
Transmission system	Torque converter	240
	Gearbox mode	Counter shaft, power-shift
	Gear shift	2 forward, 2 reverse
	Max. speed	25km/h
Drive axle	Main reducing spiral	Circular Arc Bevel gear, single stage
	Decelerating mode	Single stage planetary type
Hydraulic system	System working pressure	16Mpa
	System flow	45L/min
Brake system	Service brake	Hydraulic disc brake on 4 wheels
	Parking brake	Flexible shaft operated disc brake
Tyre	Tyre model	400/60-15.5
	Width	402mm
	Diameter:	870mm
Optional Tyre	Tyre model	31*15.5-15(Tubeless tire) 33*15.5-16.5(Tubeless tire)
	Filling capacity	Diesel fuel tank 80L Hydraulic tank 80L

Rated loading	1600kg
Operation weight	4300kg
Rated bucket capacity	0.65m ³
Max. grade ability	30°
Min. ground clearance	230mm
Steering angle	40°
Max. dump height	2650mm
Dump distance	920mm
Overall dimension (L*W*H)	5280x1800x2680mm
Dumping angle	45°
Function of leveling automatic	Yes
Wheelbase	2470mm
Track base	1600mm



H 380 | H SERIES LOADER

WHEEL LOADER

HERACLES



Engine	Brand/Model	YUNNEI/YN27GB
	Type	Vertical, in-line, water cooling, 4-cylinder
	Rated power	42KW
	Optional brand	EURO5 CHANGCHAI engine EPA4 KOHLER/CUMMINS engine
Transmission system	Torque converter	265
	Gearbox mode	Counter shaft, power-shift
	Gear shift	2 forward, 2 reverse
	Max. speed	25km/h
Drive axle	Main reducing spiral	Circular Arc Bevel gear, single stage
	Decelerating mode	Single stage planetary type
Hydraulic system	System working pressure	16Mpa
	System flow	45L/min
Brake system	Service brake	Hydraulic disc brake on 4 wheels
	Parking brake	Flexible shaft operated disc brake
Tyre	Tyre model	400/60-15.5
	Width	402mm
	Diameter:	870mm
Optional Tyre	Tyre model	14-17.5(Tubeless tire) 33*15.5-16.5(Tubeless tire)
	Filling capacity	Diesel fuel tank 80L Hydraulic tank 80L

PRODUCT PARAMETERS

Rated loading	1800kg
Operation weight	4500kg
Rated bucket capacity	0.75m ³
Max. grade ability	30°
Min. ground clearance	260mm
Steering angle	40°
Max. dump height	2650mm
Dump distance	920mm
Overall dimension (L*W*H)	5280x1900x2680mm
Dumping angle	45°
Function of leveling automatic	Yes
Min. turning radius	3280mm
Wheelbase	2210mm
Track base	1600mm

HERACLES

H 480 | H SERIES LOADER

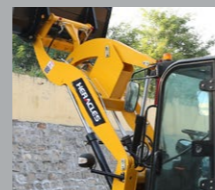
WHEEL LOADER



Rated loading	2000kg
Operation weight	5000kg
Rated bucket capacity	1m ³
Max. grade ability	30°
Min. ground clearance	260mm
Wheelbase	2200mm
Steering angle	40°
Max. dump height	2700mm
Overall dimension (L*W*H)	5210x1880x2610mm
Min. turning radius	4510mm
Track base	1510mm
Dumping angle	45°
Function of leveling automatic	Yes

PRODUCT PARAMETERS

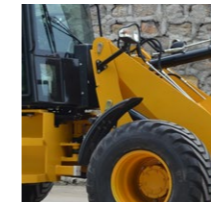
Engine	Brand/Model	YUNNEI/YN33GBZ
	Type	Vertical, in-line, water cooling, 4-cylinder, turbo type
	Rated power	65KW
Optional brand	EU5 engine:	CHANGCHAI
	EPA4 engine:	KOLHER or CUMMINS
Transmission system	Torque converter	265
	Gearbox mode	Counter shaft, power-shift
	Gear shift	4 forward, 4 reverse
Max. speed		35km/h
	Main reducing spiral	Circular Arc Bevel gear, single stage
Drive axle	Decelerating mode	Single stage planetary type
	System working pressure	16Mpa
Hydraulic system	System flow	63L/min
	Service brake	Hydraulic disc brake on 4 wheels
Brake system	Parking brake	Flexible shaft operated external drum
	Tyre model	500/50-17 (Tubeless tire)
Tyre	Width	501mm
	Diameter:	935mm
Filling capacity	Diesel fuel tank	80L
	Hydraulic tank	80L



H 580 | H SERIES LOADER

WHEEL LOADER

PRODUCT PARAMETERS



Engine	Brand/Model	YUNNEI/YN38GBZ
	Type	Vertical, in-line, water cooling, 4-cylinder, turbo type
	Rated power	76KW
Optional brand	EU5 engine:	CHANGCHAI
	EPA4 engine:	KOLHER or CUMMINS
Transmission system	Torque converter	265
	Gearbox mode	Counter shaft, Power-shift
	Gear shift	4 forward, 4 reverse
Max. speed		35km/h
	Main reducing spiral	Circular Arc Bevel gear, single stage
Drive axle	Decelerating mode	Single stage planetary type
	System working pressure	16Mpa
Hydraulic system	System flow	63L/min
	Service brake	Hydraulic disc brake on 4 wheels
Brake system	Parking brake	Flexible shaft operated external drum
	Tyre model	500/45-22.5 tire (16PR)
Tyre	Width	500mm
	Diameter:	1030mm
Filling capacity	Diesel fuel tank	100L
	Hydraulic tank	100L
Packing quantity		2Units (1*40HC)

Rated loading	2500kg
Operation weight	6000kg
Rated bucket capacity	1.3m ³
Max. grade ability	30°
Min. ground clearance	300mm
Wheelbase	2550mm
Steering angle	45°
Max. dump height	3300mm
Dump distance	930mm
Overall dimension (L*W*H)	6100x2130x2680mm
Min. turning radius	4200mm
Track base	1600mm
Dumping angle	40°
Function of leveling automatic	Yes

HERACLES



H 680 | H SERIES LOADER

WHEEL LOADER

HERACLES

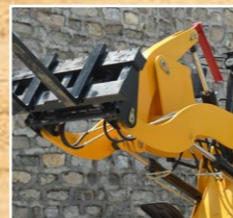
H 780 | H SERIES LOADER

WHEEL LOADER

HERACLES

Engine	Brand/Model	YUCHAI
	Type	Vertical, in-line, water cooling, 4-cylinder, turbo type
	Rated power	91KW
Optional brand	EU5 engine:YUNNEI or YUCHAI or FPT engine	
	EPA4 engine: FPT or CUMMINS engine	
Transmission system	Torque converter	280
	Gearbox mode	Counter shaft, Power-shift
	Gear shift	4 forward,4 reverse
	Max. speed	35km/h
Drive axle	Main reducing spiral	Circular Arc Bevel gear, single stage
	Decelerating mode	Single stage planetary type
Hydraulic system	System working pressure	16Mpa
	System flow	63L/min
Brake system	Service brake	Hydraulic disc brake on 4 wheels
	Parking brake	Flexible shaft operated external drum
Tyre	Tyre model	500/60-22.5 tire(18PR)
	Width	500mm
Filling capacity	Diesel fuel tank	110L
	Hydraulic tank	110L
Packing quantity	2Units (1*40HC)	

Rated loading	2800kg
Operation weight	6300kg
Rated bucket capacity	1.5m ³
Max. grade ability	30°
Min. ground clearance	360mm
Wheelbase	2550mm
Steering angle	45°
Max. dump height	3300mm
Dump distance	930mm
Overall dimension (L*W*H)	6100x2130x2720mm
Min. turning radius	4200mm
Track base	1600mm
Dumping angle	40°
Function of leveling automatic	Yes



Rated loading	3000kg
Operation weight	6500kg
Rated bucket capacity	1.7m ³
Max. grade ability	30°
Min. ground clearance	360mm
Wheelbase	2550mm
Steering angle	45°
Max. dump height	3300mm
Dump distance	930mm
Overall dimension (L*W*H)	6100x2130x2720mm
Min. turning radius	4510mm
Track base	1600mm
Dumping angle	40°
Function of leveling automatic	Yes



Engine	Brand/Model	YUCHAI
	Type	Vertical, in-line, water cooling, 4-cylinder, turbo type
	Rated power	91KW
Optional brand	EU5 engine:YUCHAI or FPT engine	
	EPA4 engine: FPT or CUMMINS engine	
Transmission system	Torque converter	315
	Gearbox mode	Counter shaft, Power-shift
	Gear shift	4 forward,4 reverse
Drive axle	Max. speed	35km/h
	Main reducing spiral	Circular Arc Bevel gear, single stage
Hydraulic system	Decelerating mode	Single stage planetary type
	System working pressure	16Mpa
Brake system	System flow	80L/min
	Service brake	Hydraulic disc brake on 4 wheels
Tyre	Parking brake	Flexible shaft operated external drum
	Tyre model	600/50-22.5 tire(18PR)
Filling capacity	Width	602mm
	Diameter:	1172mm
Packing quantity	Diesel fuel tank	120L
	Hydraulic tank	120L

PRODUCT PARAMETERS

TR38 SKID STEER LOADER

PRODUCT PARAMETERS

Performance parameter	Metric system	British system
Carrying capacity	380Kg(62% tipping load)	837.7Lb
Bucket volume	0.15 m ³	5.33ft ³
Maximum lifting force	550KG	1212.5Lb
Maximum lift	380 Kg	837.7Lb
Speed	0-5.5 Km/h	0-3.4 mlie/h
Operating weight	860Kg	1895.97Lb
Tractive effort	No load: 520KG	Full load: 530KG
Angle of climb	17degree	
Service time (full oil)	3-4h	

PRODUCT PARAMETERS

Item	Metric system	British system
Carrying capacity	380Kg	837.7Lb
Bucket volume	0.15 m ³	5.33ft ³
Maximum lifting force	550KG	1212.5Lb
Maximum lift	380 Kg	837.7Lb
Speed	0-5.5 Km/h	0-3.4 mlie/h
Machine net weight	710Kg	1565.28Lb
Working weight	1100KG	2425.08Lb
Tractive effort	No load: 520KG	Full load:530KG
Angle of climb	17degree	



HERACLES

HERACLES



Engine	
Rated power (KW):19.2KW(26HP) (Runtong brand)	
Rated speed (rpm):3600	
Noise (Db):≤95	
Fuel tank volume(L):28 L	
Hydraulic tank volume(L):20 L	
Hydraulic system	
System Pressure (Mpa):17MPa=170bar=2465psi	
Standard flow(L/Min):25L/min	
Traveling pump flow(L/Min):22L/min 36L/min	
Replenishment pump flow(L/Min):10L/min 13L/min	
Working system(L/Min):44L/min 44L/min	
Working hours	
Lift(S):4.27 Load(S):1.34	
Landing(S):3.31	
Tyre type	
Herringbone engineered tire:18*8.5-8	

Item	Metric system	British system
Maximum working height (A)	2200mm	86.61inch
Maximum pin height (B)	1884mm	74.17inch
Maximum discharge height (C)	1488mm	58.58inch
Maximum discharge distance (D)	348mm	13.7inch
Bucket swing Angle (β)	55°	55°
Bucket discharge Angle (γ)	30°	30°
Suction Angle (θ)	25°	25°
Departure Angle (α)	11°	11°
Total height (H)	1280mm	50.39inch
Ground height (F)	100mm	3.93inch
Wheelbase (G)	860mm	33.85inch
No bucket length (J)	1780mm	70.07inch
Total width (W)	1200mm	47.24inch
Bucket width (K)	1190mm	46.85inch
Total length (L)(with bucket)	2500mm	98.42inch
Front turning radius (R)	1307mm	51.5inch

TR40 SKID STEER LOADER

Item	Metric system	British system
Maximum working height (A)	2200mm	86.61inch
Maximum pin height (B)	1884mm	74.17inch
Maximum discharge height (C)	1488mm	58.58inch
Maximum discharge distance (D)	348mm	13.7inch
Bucket swing Angle (β)	55°	55°
Bucket discharge Angle (γ)	30°	30°
Suction Angle (θ)	25°	25°
Departure Angle (α)	11°	11°
Total height (H)	1280mm	50.39inch
Ground height (F)	100mm	3.93inch
Wheelbase (G)	860mm	33.85inch
No bucket length (J)	1680mm	66.14inch
Total width (W)	1200mm	47.24inch
Bucket width (K)	1190mm	46.85inch
Total length (L)(with bucket)	2400mm	94.48inch

Engine	
Rated power (KW):Briggs&Stratton	
Rated speed (rpm):3600	
Noise (Db):≤95	
Fuel tank volume(L):28 L	
Hydraulic tank volume(L):20 L	
Hydraulic system	
System Pressure (Mpa):17MPa=170bar=2465psi	
Standard flow(L/Min):25L/min	
Traveling pump flow(L/Min):22L/min 36L/min	
Replenishment pump flow(L/Min):10L/min 13L/min	
Working system(L/Min):44L/min 44L/min	
Working hours	
Lift(S):4.27 Load(S):1.34 Landing (S):3.31	
Tyre type	
Herringbone engineered tire:18*8.5-8	

TR43 SKID STEER LOADER

PRODUCT PARAMETERS

Engine
Rated power (HP): Runtong 739 26Hp
Rated speed (rpm): 3600
Noise (Db): ≤95
Fuel tank volume(L): 30 L
Hydraulic tank volume(L): 20 L
Hydraulic system
System Pressure (Mpa): 25MPa=250bar=3626psi
Standard flow(L/Min): 33L/min
Traveling pump flow(L/Min): 75L/min 90L/min
Replenishment pump flow(L/Min): 10L/min 13L/min
Working system(L/Min): 44L/min 44L/min
Tyre type
Herringbone engineered tyre: 18*8.5-8
Performance parameter
Carrying capacity: 430Kg(62% tipping load) 947.9Lb
Bucket volume: 0.17 m ³ 6ft ³
Maximum lift: 430Kg 947.9Lb
Speed: 0-7 Km/h 0-4.3 mlie/h
Net weight: 950Kg 2094.39Lb
Angle of climb: 20degree



HERACLES

TR50 SKID STEER LOADER

PRODUCT PARAMETERS

Walking mode	Wheel	Crawler
Operating load (kg)	700	700
Max Speed (km/h)	10	10
Rated flux (L/min)	80	80
Tire (track) model	10-16.5NHS	300X52.5
Rated power (Kw)	45KW	45KW
Fuel tank capacity (L)	70	50
Dead weight (kg)	2600	2700
Self weight bucket (kg)	2700	2800
Bucket capacity (m ³)	0.4	0.4
Overall operating height (mm)	4042	3660
Height to bucket hinge pin (mm)	3079	2730
Hheight to top of cab (mm)	2230	2349
Height to bottom of level bucket(mm)	2909	2500
Without bucket length (mm)	2325	2170
Overall length with bucket(mm)	3276	3150
Dumping angle at maximum height(°)	37.5	40
Dumping height(mm)	2342	1990
Dumping reach(mm)	550	1040
Rollback o bucket on ground(°)	20.5	30
Rollback of bucket at full height(°)	96.5	100
Wheelbase(mm)	991	1230
Ground clearance(mm)	185	230
Angle of departure(°)	20	18.5
Front turning radius without bucket(mm)	1188	1064
Front tuning radius(mm)	2209.5	1825
Rear tuning radius(mm)	1481.5	1264
Rear axle to bumper (mm)	929	590
Tread width (mm)	1462.5	1022
Width (mm)	1726.5	1422
Bucket width (mm)	1742	1700



HERACLES

Item	Metric system	British system
Maximum working height	2400mm	94.84inch
Maximum pin height	2200mm	86.61inch
Maximum discharge height	2000mm	78.74inch
Maximum discharge distance	800mm	31.4inch
Bucket swing Angle	55°	55°
Bucket discharge Angle	40°	40°
Departure Angle	20°	20°
Total height	1350mm	53.14inch
Ground height	100mm	3.93inch
Wheelbase	860mm	33.85inch
No bucket length	2020mm	79.52inch
Total width	1200mm	47.24inch
Bucket width	1200mm	47.24inch
Total length (with bucket)	2600mm	102.36inch





HERACLES

HERACLES

TR65 SKID STEER
LOADER



Walking mode	Wheel	Crawler
Operating load (kg)	1050	1000
Max Speed (km/h)	10	12
Rated flux (L/min)	89	89
Tire (track) model	12-16.5NHS	300X52.5
Rated power (Kw)	55KW	55KW
Fuel tank capacity (L)	75	90
dead weight (kg)	3300	3700
self weight bucket (kg)	3400	3800
Bucket capacity (m ³)	0.5	0.5
Overall operating height (mm)	3987	3900
Height to bucket hinge pin (mm)	3018	2970
Hheight to top of cab (mm)	2295	2409
Height to bottom of level bucket(mm)	2862	2790
Without bucket length (mm)	2527	2450
Overall length with bucket(mm)	3428	3400
Dumping angle at maximum height(°)	32	40
Dumping height(mm)	2410	2270
Dumping reach(mm)	850	1120
Rollback o bucket on ground(°)	23	30
Rollback of bucket at full height(°)	95	100
Wheelbase(mm)	1074	1500
Ground clearance(mm)	205	200
Angle of departure(°)	20	18.5
Front turning radius without bucket(mm)	1320.5	1230
Front tuning radius(mm)	2096.5	2010
Rear tuning radius(mm)	1647.5	1720
Rear axle to bumper (mm)	1057	730
Tread width (mm)	1498	1482
Width (mm)	1805	1782
Bucket width (mm)	1880	1830

PRODUCT PARAMETERS



DUMPER

H100

H150

Technical parameter	H100	H150
Wheel Base(mm)	1530	1530
Min. Ground Clearance(mm)	227	227
Dump Height(mm)	935	850
Front Edge Height of the Bucket(mm)	1217	1217
Max. Dump Height(mm)	2327	2341
Dump Angle(°)	72°	72°
Tipping Bucket Length(mm)	1410	1528
Safe Dumping Distance Front(mm)	367	480
Safe Dumping Distance Lateral(mm)	335	475
Payload (kg)	1000	1500
Weight(kg)	1660	1660
Tire model	10.0/75-15.3	10.0/75-15.3



Technical parameter	H100	H150
Tire width(mm)	264	264
Overall dimension(L x W x H)(mm)	3320×1150×2150	3320×1150×2150
Bucket capacity(m ³)	0.5	0.5
Engine brand	CAHNGCHAI	CAHNGCHAI
Engine emission	EURO5	EURO5
Engine model	3M78-23E	3M78-23E
Rate power	17.75KW	17.75KW
Hydraulic tank capacity(L)	30	30
Diesel tank capacity(L)	30	30
Maximum travel speed(km/h)	15	15
Grade ability(°)	30	30
Max. turning angle of the bucket(°)	±90°	±90°



H300 DUMPER



Bucket capacity	— 1.5m ³
Rated load	— 3000kg
Operating weight	— 3500kg
Grade ability	— 25°
Wheel tread	— 1820mm
Wheel base	— 1300mm
Bucket rotation degree	— 180°
Overall dimension	— 4350*1580*2680mm with simple cab

PRODUCT PARAMETERS

Engine	Brand	YUNNEI
	Model	YN27GB
	Type	In line\direct injection\water cooler\4 cylinders
	Rated power	42kw
Optional engine		EURO5 CHANGCHAI;EPA4 KOHLER/CUMMINS
Transmission system	Gearbox Model	240
	Clutch	Dry friction
	Nos of shifts	Move forward 2 backward 2
	Max speed	24km/h
Rear and front axle		4×4,front axle fixed , rear axle swing
Steering	Type	Hydraulic steering
	Steering angle	30°
Hydraulic system	Pressure	16MPA
	Brake type	Drum brake
Tyre	Size	20.5/70-16
	Work device	
Fuel capacity	Diesel oil tank	90L
	Hydraulic oil tank	100L



OPTIONAL ATTACHMENT PICTURE



HERACLES

CUSTOMER CUSTOMIZATION IS OUR STANDARD