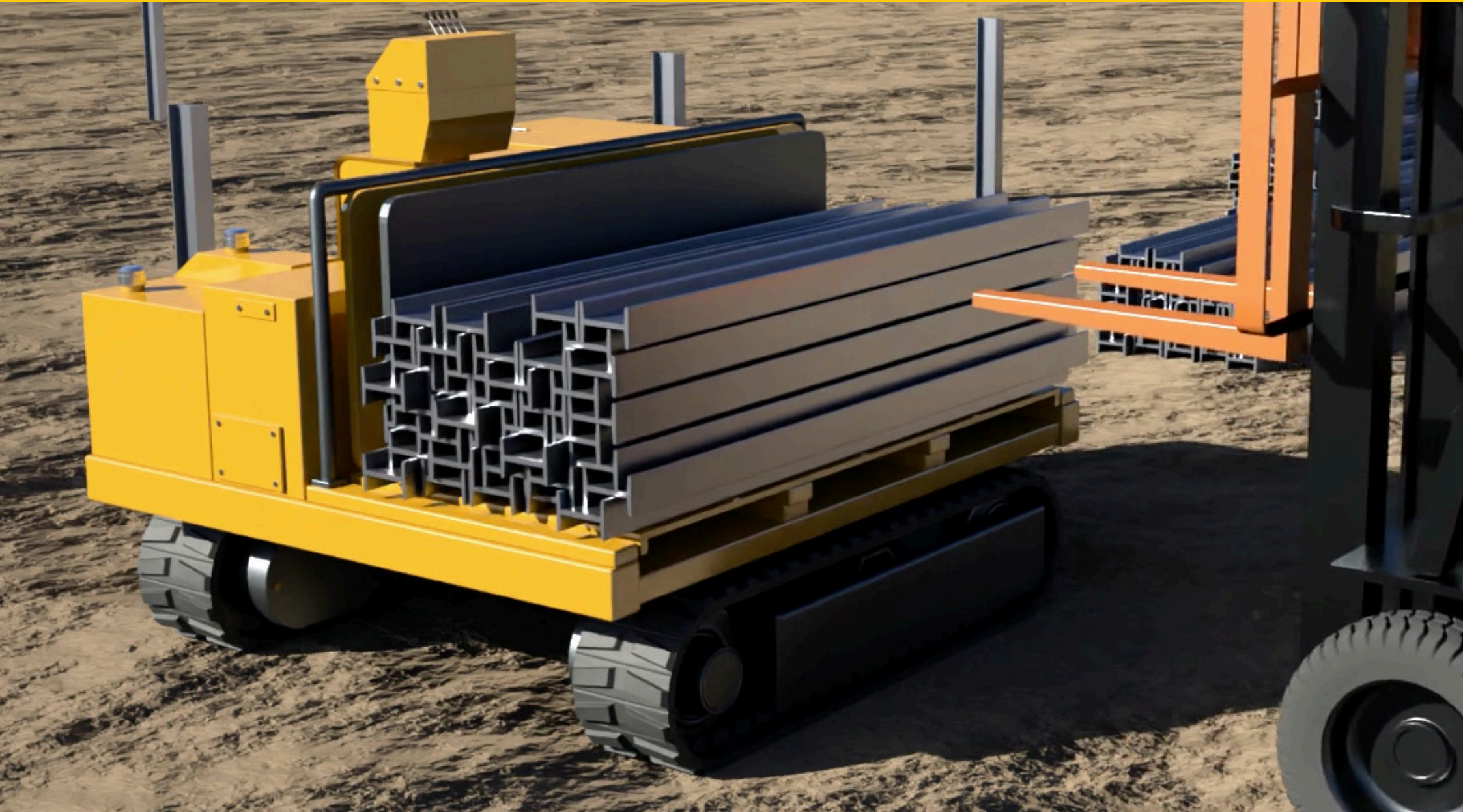




Groundwork

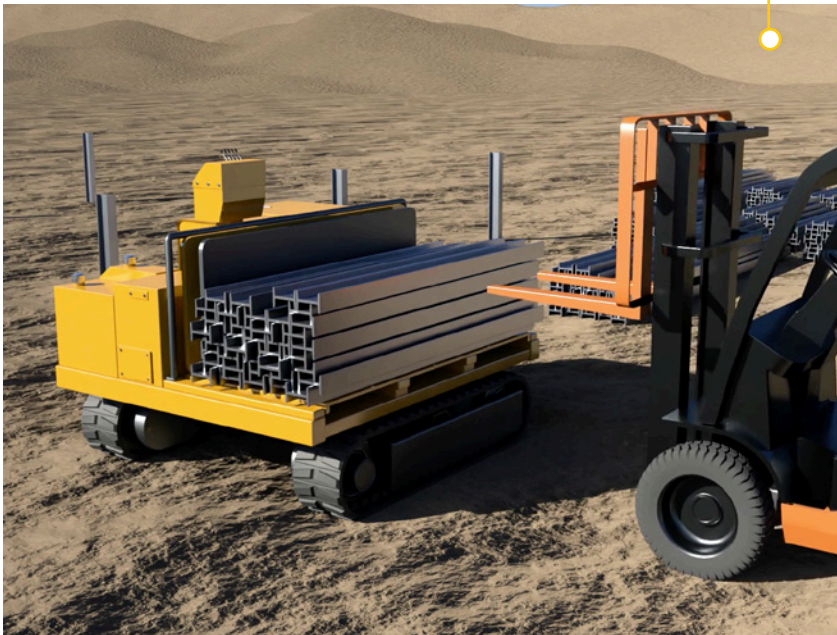
CHALLENGER 1600 PILE CARRIER



Introduction

GROUNDWORK supplies the CHALLENGER 1600 Pile Carrier; designed to accompany the Challenger 1500 Pile Placer, the 1600, is used for transferring piles from the stock pile directly onto the 1500. With this machine, operators do not need to physically load and unload piles. A forklift is used to distribute the piles onto the 1600, where it is then driven out onto the feild by a remote control and the piles are transferred directly onto the Challenger 1500.

Piles loaded onto the Challenger 1600 by forklift



Piles transferred from the Challenger 1600



4 Step Process

1

The fork lift loads the piles onto the Challenger 1600 from the delivery point.



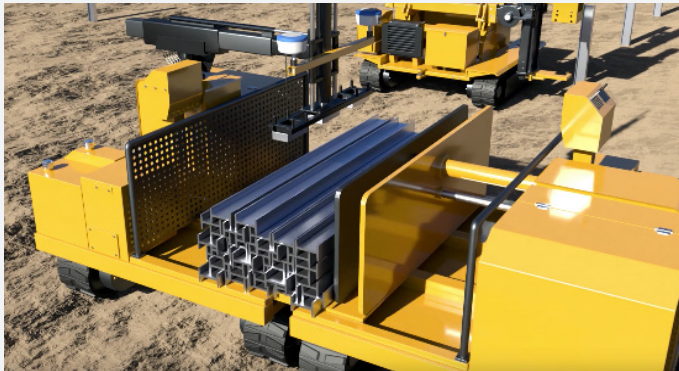
2

The Challenger 1600 pile carrier then drives to the Challenger 1500 Pile Placer



3

The piles are transferred from the Challenger 1600 Pile Carrier onto the Challenger 1500 Pile Placer by a telescopic arm



4

The Challenger 1500 works alongside the pile driver, the piles are placed using GPS co-ordinates





SPECIFICATIONS

Tracks:	Self-propelled tracked machine with rubber tracks soundproof diesel engine 48HP Tier 4
Translation speed:	2-4 km/h / 1.2 – 2.4 M/h
Maximum pump flow:	78 L/m / 17 G/m
Maximum working pressure:	Mpa 15 / 2175 PSI
Oil tank capacity:	75 L / 16 G
Fuel tank capacity:	75 L / 16 G
Remote Control working time:	10 hours
Deck:	Hydraulic moving deck to transfer piles to 1500
Weight:	3400 Kg / 7500 Lbs
Dimensions: L x W	3000mm length x 2200mm width 9.85' length x 7.22' width
Maximum load allowed:	4500 Kg / 9920 Lbs

* Specifications subject to changes